



Wheel Options

Acorn Industrial Products Co
520 Hertzog Boulevard
King of Prussia, PA 19406
Phone 800-523-5474
Fax 800-782-6780
E-Mail acorn@acornindprod.com

INDUSTRIES

'SAS' SERIES HIGH LOAD CAPACITY POLYURETHANE WHEELS

- High Load Capacity Liquid Cast Premium Polyurethane Wheels 93 ± 3 Shore A
- Polyurethane firmly bonded to precision machined Cast Iron Core
- Low rolling resistance; Smooth and Noiseless running.
- Non-Marking and floor protective.
- High Abrasion, Cut and Tear resistant
- 100% tested and guaranteed against Bond Failures.
- Bearing Options:- Precision Ball Bearings; Tapered Roller Bearings
Roller Bearings
- Temperature Range: -40° F to +180° F
- Conductive Polyurethane (add suffix 'C') and Anti-Static Polyurethane (add suffix 'AS') available



Part No.	Wheel Dia (inch)	Tread Width (inch)	Load Capacity (Lbs)	Hub Length (inch)	Axle Bore with Spanner/Top Hat (inch)	Type of Bearing
SAS-415-BB	4	1-1/2	650	1-5/8	1/2	
SAS-42-BB	4	2	900	2-3/16	1/2	
SAS-515-BB	5	1-1/2	1000	1-5/8	1/2	
SAS-52-BB	5	2	1200	2-3/16	1/2	
SAS-615-BB	6	1-1/2	1000	1-5/8	1/2	
SAS-62-BB	6	2	1650	2-3/16	1/2	
SAS-625-BB	6	2-1/2	2100	2-3/4	3/4	
SAS-63-BB	6	3	2300	3-1/4	3/4	
SAS-82-BB	8	2	2200	2-3/16	1/2	
SAS-825-BB	8	2-1/2	2650	2-3/4	3/4	
SAS-83-BB	8	3	3100	3-1/4	3/4	
SAS-84-BB	8	4	4000	4-1/4	1 & 1-1/4	
SAS-102-BB	10	2	2650	2-3/16	1/2	
SAS-1025-BB	10	2-1/2	3000	2-3/4	3/4 & 1	
SAS-103-BB	10	3	4000	3-1/4	3/4 & 1	
SAS-104-BB	10	4	4800	4-1/4	1 & 1-1/4	
SAS-122-BB	12	2	3100	2-3/16	3/4	
SAS-1225-BB	12	2-1/2	3500	2-3/4	3/4 & 1	
SAS-123-BB	12	3	4800	3-1/4	3/4 & 1	
SAS-124-BB	12	4	6100	4-1/4	1 & 1-1/4	
SAS-163-BB	16	3	5500	3-1/4	1 & 1-1/4	
SAS-164-BB	16	4	7700	4-1/4	1 & 1-1/4	
SAS-183-BB	18	3	6600	3-1/4	1-1/4	
SAS-203-BB	20	3	7000	3-1/4	1-1/4	

★ Please Change Suffix to 'RB' while ordering wheels fitted with Roller Bearings

★ Please change Suffix to 'TRB' while ordering wheels fitted with Tapered Roller Bearings



'SZS' SERIES THICK TREADED ELASTIC URETHANE WHEELS

- Elastic 85±3 Shore A Liquid Cast Polyurethane firmly bonded to Cast Iron Core
- Reduced noise due to cushioning of loads,
- Lively Polyurethane allows wheels to 'Flex and Roll' over debris
- Excellent for power towing applications
- Non-Marking and floor protective.
- 100% Tested and Guaranteed against bond failures
- Bearing Options:- Precision Ball Bearings; Tapered Roller Bearings; Roller Bearings;
- Temperature Range:- -40° F to + 180° F



Part No.	Wheel Dia (inch)	Tread Width (inch)	Load Capacity (Lbs)	Hub Length (inch)	Axle Bore with Spanner/Top Hat (inch)	Type of Bearing
SZS-42-BB	4	2	550	2-3/16	1/2	
SZS-52-BB	5	2	775	2-3/16	1/2	
SZS-62-BB	6	2	1000	2-3/16	1/2	
SZS-625-BB	6	2-1/2	1500	2-3/4	3/4	
SZS-63-BB	6	3	1800	3-1/4	3/4	
SZS-82-BB	8	2	1450	2-3/16	1/2	
SZS-825-BB	8	2-1/2	2500	2-3/4	3/4	
SZS-83-BB	8	3	2800	3-1/4	3/4 & 1	
SZS-84-BB	8	4	3000	4-1/4	1 & 1-1/4	
SZS-102-BB	10	2	1650	2-3/16	1/2	
SZS-103-BB	10	3	3000	3-1/4	3/4 & 1	
SZS-104-BB	10	4	3650	4-1/4	1 & 1-1/2	
SZS-1225-BB	12	2-1/2	2900	2-3/4	3/4 & 1	
SZS-123-BB	12	3	3200	3-1/4	3/4 & 1	
SZS-124-BB	12	4	4600	4-1/4	1 & 1-1/4	

★ Please Change Suffix to 'RB' while ordering wheels fitted with Roller Bearings

★ Please change Suffix to 'TRB' while ordering wheels fitted with Tapered Roller Bearings

'ME' SERIES ERGONOMIC WHEELS

- Ergonomic Premium Polyurethane Wheels for low Push-Pull Efforts
- Polyurethane 93 ± 3 Shore A mechanically and chemically bonded to precision machined cores.
- Non-Marking and floor protective.
- 100% Tested and Guaranteed against bond failures
- Tread Options : Softer 80A – Yellow Tread (Specify ME-Z) and Harder 73D – Blue Tread (Specify ME-F)
- Bearing Options: - Precision Ball Bearings; Tapered Roller Bearings
Roller Bearings;
- Temperature Range: -40° F to + 180° F
- Conductive Polyurethane (add suffix 'C') and Anti-Static Polyurethane (add suffix 'AS') available



Part No.	Wheel Dia (inch)	Tread Width (inch)	Load Capacity (Lbs)	Hub Length (inch)	Axle Bore with Spanner/Top Hat (inch)	Type of Bearing
ME-42-BB	4	2	775	2-3/16	1/2	
ME-52-BB	5	2	1000	2-3/16	1/2	
ME-62-BB	6	2	1250	2-3/16	1/2	
ME-63-BB	6	3	1875	3-1/4	3/4	
ME-82-BB	8	2	1700	2-3/16	1/2	
ME-83-BB	8	3	2400	3-1/4	3/4	
ME-102-BB	10	2	1850	2-3/16	1/2	
ME-103-BB	10	3	2850	3-1/4	3/4 & 1	
ME-122-BB	12	2	2300	2-3/16	3/4	
ME-123-BB	12	3	3500	3-1/4	3/4 & 1	

★ Please Change Suffix to 'RB' while ordering wheels fitted with Roller Bearings

★ Please change Suffix to 'TRB' while ordering wheels fitted with Tapered Roller Bearings



'SFS' SERIES SOLID ELASTOMER WHEELS

- The Ultimate Real Solid Elastomer Wheels exclusively developed by Muvtons
- Premium Liquid Cast 73 ± 3 Shore D Polyurethane locked mechanically to a non-corrosive metallic core that holds the precision bearings and provides structural rigidity.
- Resist compression set and provide excellent resilience for easy movement
- Non-Marking and floor protective
- Can be used for corrosive applications with suitable bearings.
- 100% Tested and Guaranteed against failures
- Bearing Options:- Precision Ball Bearings; Tapered Roller Bearings
Roller Bearings
- Temperature Range:- -40°F to $+180^{\circ}\text{F}$



Part No.	Wheel Dia (inch)	Tread Width (inch)	Load Capacity (Lbs)	Hub Length (inch)	Axle Bore with Spanner/Top Hat (inch)	Type of Bearing
SFS-42-BB	4	2	825	2-3/16	1/2	
SFS-52-BB	5	2	1100	2-3/16	1/2	
SFS-62-BB	6	2	1500	2-3/16	1/2	
SFS-63-BB	6	3	2500	3-1/4	3/4	
SFS-82-BB	8	2	1750	2-3/16	1/2	
SFS-825-BB	8	2-1/2	2000	2-3/4	3/4	
SFS-83-BB	8	3	2500	3-1/4	3/4	
SFS-84-BB	8	4	3800	4-1/4	1 & 1-1/4	
SFS-102-BB	10	2	2200	2-3/16	1/2	
SFS-1025-BB	10	2-1/2	2500	2-3/4	3/4 & 1	
SFS-103-BB	10	3	3000	3-1/4	3/4 & 1	
SFS-104-BB	10	4	4200	4-1/4	1 & 1-1/4	
SFS-122-BB	12	2	2500	2-3/16	1/2	
SFS-123-BB	12	3	3400	3-1/4	3/4 & 1	
SFS-124-BB	12	4	4500	4-1/4	1 & 1-1/4	

★ Please Change Suffix to 'RB' while ordering wheels fitted with Roller Bearings

★ Please change Suffix to 'TRB' while ordering wheels fitted with Tapered Roller Bearings

'SJS' SERIES POLYURETHANE WHEELS

- Liquid Cast Polyurethane 93 ± 3 Shore A firmly bonded to precision machined Cast Iron Cores.
- Low rolling resistance; Smooth and noiseless running
- Non-Marking and floor protective
- Good Abrasion and cut resistance
- 100% Tested and Guaranteed against bond failures
- Ideal for medium duty applications
- Bearing Options: - Precision Ball Bearings; Tapered Roller Bearings
Roller Bearings
- Temperature Range: - 40° F to +180 ° F



Part No.	Wheel Dia (inch)	Tread Width (inch)	Load Capacity (Lbs)	Hub Length (inch)	Axle Bore with Spanner/Top Hat (inch)	Type of Bearing
SJS-42-BB	4	2	700	2-3/16	1/2	
SJS-515-BB	5	1-1/2	750	1-5/8	1/2	
SJS-52-BB	5	2	1000	2-3/16	1/2	
SJS-615-BB	6	1-1/2	840	1-5/8	1/2	
SJS-62-BB	6	2	1200	2-3/16	1/2	
SJS-625-BB	6	2-1/2	1600	2-3/4	3/4	
SJS-63-BB	6	3	2100	3-1/4	3/4	
SJS-82-BB	8	2	1500	2-3/16	1/2	
SJS-825-BB	8	2-1/2	2100	2-3/4	3/4	
SJS-83-BB	8	3	2500	3-1/4	3/4	
SJS-102-BB	10	2	1800	2-3/16	1/2	
SJS-1025-BB	10	2-1/2	2300	2-3/4	3/4 & 1	
SJS-103-BB	10	3	3000	3-1/4	3/4 & 1	
SJS-1225-BB	12	2-1/2	2700	2-3/4	3/4 & 1	
SJS-123-BB	12	3	3500	3-1/4	3/4 & 1	

★ Please Change Suffix to 'RB' while ordering wheels fitted with Roller Bearings

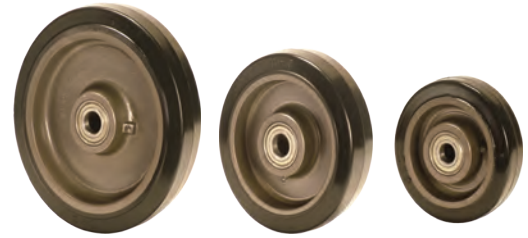
★ Please change Suffix to 'TRB' while ordering wheels fitted with Tapered Roller Bearings





'SEB' SERIES HEAVY DUTY MOLDON RUBBER WHEELS

- Elastic Rubber tired wheels chemically bonded to precision machined Cast Iron Cores.
- Highly resilient 75 ± 5 Shore A rubber.
- Smooth and silent running in power towing applications.
- Bearing Options:- Precision Ball Bearings; Tapered Roller Bearings
Roller Bearings
- Temperature Range: -40° F to +180° F



Part No.	Wheel Dia (inch)	Tread Width (inch)	Load Capacity (Lbs)	Hub Length (inch)	Axle Bore with Spanner/Top Hat (inch)	Type of Bearing
SEB-415-BB	4	1-1/2	325	1-5/8	1/2	
SEB-42-BB	4	2	450	2-3/16	1/2	
SEB-515-BB	5	1-1/2	400	1-5/8	1/2	
SEB-52-BB	5	2	600	2-3/16	1/2	
SEB-62-BB	6	2	775	2-3/16	1/2	
SEB-63-BB	6	3	950	3-1/4	3/4	
SEB-82-BB	8	2	1000	2-3/16	1/2	
SEB-83-BB	8	3	1200	3-1/4	3/4	
SEB-84-BB	8	4	1500	4-1/4	1 & 1-1/4	
SEB-102-BB	10	2	1100	2-3/16	1/2	
SEB-103-BB	10	3	1650	3-1/4	3/4 & 1	
SEB-104-BB	10	4	2100	4-1/4	1 & 1-1/4	
SEB-122-BB	12	2	1450	2-3/16	3/4	
SEB-123-BB	12	3	1850	3-1/4	3/4 & 1	
SEB-143-BB	14	3	2400	3-1/4	1 & 1-1/4	
SEB-163-BB	16	3	2600	3-1/4	1 & 1-1/4	
SEB-164-BB	16	4	3300	4-1/4	1 & 1-1/4	

★ Please Change Suffix to 'RB' while ordering wheels fitted with Roller Bearings

★ Please change Suffix to 'TRB' while ordering wheels fitted with Tapered Roller Bearings

'MOR' SERIES MOLDON RUBBER WHEELS

- Black rubber wheels firmly bonded to precision machined Cast Iron Cores
- Smooth and silent running
- Good quality 75 Shore A rubber with minimum Tensile Strength of 1000 psi
- Suitable for medium duty hand truck applications.
- Bearing Options: - Roller Bearings, Precision Ball Bearings;
- Temperature Range: - 40° F to + 180° F



Part No.	Wheel Dia (inch)	Tread Width (inch)	Load Capacity (Lbs)	Hub Length (inch)	Axle Bore with Spanner/Top Hat (inch)	Type of Bearing
MOR-415-BB	4	1-1/2	250	1-5/8	1/2	
MOR-42-BB	4	2	350	2-3/16	1/2	
MOR-515-BB	5	1-1/2	300	1-5/8	1/2	
MOR-52-BB	5	2	400	2-3/16	1/2	
MOR-62-BB	6	2	450	2-3/16	1/2	
MOR-625-BB	6	2-1/2	575	2-3/4	3/4	
MOR-63-BB	6	3	680	3-1/4	3/4	
MOR-82-BB	8	2	525	2-3/16	1/2	
MOR-825-BB	8	2-1/2	675	2-3/4	3/4	
MOR-83-BB	8	3	850	3-1/4	3/4	
MOR-102-BB	10	2	700	2-3/16	1/2	
MOR-1025-BB	10	2-1/2	800	2-3/4	3/4	
MOR-103-BB	10	3	1000	3-1/4	3/4 & 1	
MOR-1225-BB	12	2-1/2	950	2-3/2	3/4 & 1	
MOR-123-BB	12	3	1150	3-1/4	3/4 & 1	
MOR-143-BB	14	3	1400	3-1/4	1 & 1-1/4	
MOR-163-BB	16	3	2000	3-1/4	1 & 1-1/4	

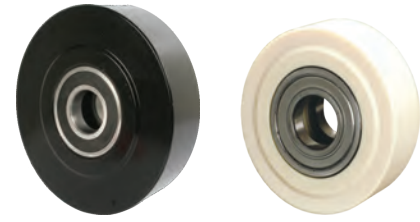
★ Please Change Suffix to 'RB' while ordering wheels fitted with Roller Bearings

★ Please change Suffix to 'TRB' while ordering wheels fitted with Tapered Roller Bearings



MUVTUFF 'MCNY' SERIES CAST POLY WHEELS

- Machined from Tough, High Impact resistant Cast Polyamide
- Ultimate choice for Extremely High Load applications to replace metallic wheels
- Offer very high Abrasion resistance and very low rolling resistance under extreme loads
- Resistant to Salt, Grease, Alcohol and mild acids - can be used in corrosive applications with appropriate bearings
- Bearing Options:- Precision Ball Bearings; Tapered Roller Bearings
- Temperature Range:- 40° F to +180° F with appropriate bearings

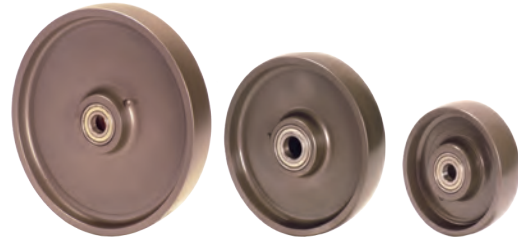


Part No.	Wheel Dia (inch)	Tread Width (inch)	Load Capacity (Lbs)	Hub Length (inch)	Axle Bore with Spanner/Top Hat (inch)	Type of Bearing
MCNY-42-BB	4	2	2800	2-3/16	1/2	
MCNY-52-BB	5	2	3100	2-3/16	1/2	
MCNY-62-BB	6	2	4400	2-3/16	1/2	
MCNY-63-BB	6	3	6000	3-1/4	3/4 & 1	
MCNY-82-BB	8	2	6000	2-3/16	1/2, 3/4 & 1	
MCNY-83-BB	8	3	10000	3-1/4	3/4 & 1	
MCNY-84-BB	8	4	12000	4-1/4	1 & 1-1/4	
MCNY-102-BB	10	2	8000	2-3/16	1/2, 3/4 & 1	
MCNY-103-BB	10	3	13000	3-1/4	3/4, 1 & 1-1/4	
MCNY-104-BB	10	4	17500	4-1/4	1, 1-1/4, 1-1/2, 2	
MCNY-123-BB	12	3	15500	3-1/4	3/4, 1, 1-1/4	
MCNY-124-BB	12	4	20000	4-1/4	1, 1-1/4, 1-1/2, 2	
MCNY-163-BB	16	3	20000	3-1/4	1, 1-1/4, 1-1/2, 2	
MCNY-164-BB	16	4	24000	4-1/4	1, 1-1/4, 1-1/2, 2	

★ Please change Suffix to 'TRB' while ordering wheels fitted with Tapered Roller Bearings

'MCI' SERIES CAST IRON WHEELS

- Special Grey cast iron wheels - solid core construction
- Fully machined tread faces – crown treaded for easy maneuverability.
- High abrasion and oil resistant
- Can be used upto 800° F with appropriate wheel bearings.
- Bearing Options: - Precision Ball Bearings; Tapered Roller Bearings
Roller Bearings
- Temperature Range: upto 800° F with appropriate bearings



Part No.	Wheel Dia (inch)	Tread Width (inch)	Load Capacity (Lbs)	Hub Length (inch)	Axle Bore with Spanner/Top Hat (inch)	Type of Bearing
MCI-415-BB	4	1-1/2	750	1-5/8	1/2	
MCI-42-BB	4	2	1000	2-3/16	1/2	
MCI-52-BB	5	2	1200	2-3/16	1/2	
MCI-62-BB	6	2	1750	2-3/16	1/2	
MCI-625-BB	6	2-1/2	2500	2-3/4	3/4	
MCI-63-BB	6	3	3000	3-1/4	3/4	
MCI-82-BB	8	2	2200	2-3/16	1/2	
MCI-825-BB	8	2-1/2	2800	2-3/4	3/4	
MCI-83-BB	8	3	3500	3-1/4	3/4	
MCI-84-BB	8	4	5000	4-1/4	1 & 1-1/4	
MCI-102-BB	10	2	2650	2-3/16	1/2	
MCI-103-BB	10	3	4000	3-1/4	3/4 & 1	
MCI-104-BB	10	4	6000	4-1/4	1 & 1-1/4	
MCI-123-BB	12	3	4500	3-1/4	1 & 1-1/4	
MCI-124-BB	12	4	8000	4-1/4	1-1/4	

★ Please Change Suffix to 'RB' while ordering wheels fitted with Roller Bearings

★ Please change Suffix to 'TRB' while ordering wheels fitted with Tapered Roller Bearings



'MDW' SERIES DUCTILE STEEL WHEELS

- Special Ductile Cast Steel wheels with fully machined tread face
- Crown Tread Face makes maneuverability easy
- Higher Load Capacities compared to Cast Iron Wheels
- Suitable for extra heavy loads towed in punishing conditions.
- High abrasion and oil resistance
- Bearing Options:- Precision Ball Bearings; Tapered Roller Bearings
Roller Bearings
- Temperature Range: upto 800° F with appropriate bearings



Part No.	Wheel Dia (inch)	Tread Width (inch)	Load Capacity (Lbs)	Hub Length (inch)	Axle Bore with Spanner/Top Hat (inch)	Type of Bearing
MDW-42-BB	4	2	1500	2-3/16	1/2	
MDW-52-BB	5	2	1550	2-3/16	1/2	
MDW-62-BB	6	2	2000	2-3/16	1/2	
MDW-625-BB	6	2-1/2	3200	2-3/4	3/4	
MDW-63-BB	6	3	3300	3-1/4	3/4	
MDW-82-BB	8	2	2200	2-3/16	1/2	
MDW-825-BB	8	2-1/2	4000	2-3/4	3/4	
MDW-83-BB	8	3	5500	3-1/4	3/4	
MDW-84-BB	8	4	8000	4-1/4	1 & 1-1/4	
MDW-102-BB	10	2	3300	2-3/16	1/2	
MDW-103-BB	10	3	6000	3-1/4	3/4 & 1	
MDW-104-BB	10	4	12000	4-1/4	1 & 1-1/4	
MDW-123-BB	12	3	6500	3-1/4	3/4 & 1	
MDW-124-BB	12	4	12000	4-1/4	1 & 1-1/4	

★ Please Change Suffix to 'RB' while ordering wheels fitted with Roller Bearings

★ Please change Suffix to 'TRB' while ordering wheels fitted with Tapered Roller Bearings

'DF' SERIES DROP FORGED STEEL WHEELS

- Hot forged from AISI 1045 steel with fully machined tread faces
- Virtually indestructible and easy to maneuver
- High abrasion and oil resistant
- Can be used in the roughest of applications on the poorest of floors
- Bearing Options:- Precision Ball Bearings; Tapered Roller Bearings
Roller Bearings
- Temperature Range: -150° F upto 800° F with appropriate bearings



Part No.	Wheel Dia (inch)	Tread Width (inch)	Load Capacity (Lbs)	Hub Length (inch)	Axle Bore with Spanner/Top Hat (inch)	Type of Bearing
DF-42-BB	4	2	1800	2-3/16	1/2	
DF-52-BB	5	2	2200	2-3/16	1/2	
DF-62-BB	6	2	2600	2-3/16	1/2	
DF-63-BB	6	3	6600	3-1/4	3/4 & 1	
DF-82-BB	8	2	3500	2-3/16	1/2	
DF-825-BB	8	2-1/2	5000	2-3/4	3/4	
DF-83-BB	8	3	8000	3-1/4	3/4	
DF-84-BB	8	4	15000	4-1/4	1 & 1-1/4	
DF-103-BB	10	3	10000	3-1/4	3/4 & 1	
DF-104-BB	10	4	15000	4-1/4	1 & 1-1/4	

★ Please Change Suffix to 'RB' while ordering wheels fitted with Roller Bearings

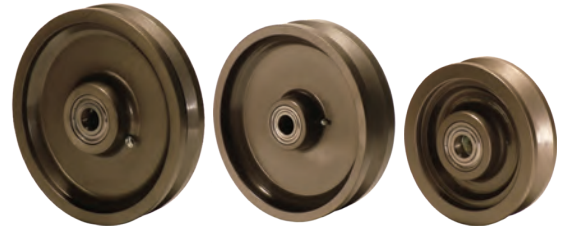
★ Please change Suffix to 'TRB' while ordering wheels fitted with Tapered Roller Bearings





'VG' Series V-Groove Cast Iron Wheels

Special grey Cast Iron Wheels, Solid Core construction; Precision machined with a 90° V-Groove for operation on inverted angle iron tracks. These Wheels offer high abrasion & oil resistance, can be used upto 600° C with appropriate wheel bearings. Wheel Bearing options: All wheels are available precision ball bearings, tapered roller bearings or roller bearings. Temperature range: - 150° F to +800° F Options: Keyway bores



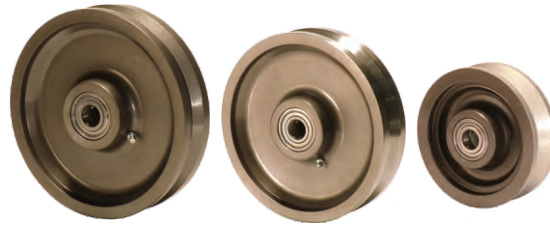
Part No.	Wheel Dia (inch)	Tread Width (inch)	Width Of Groove (inch)	Depth Of Groove (inch)	Load Capacity (Lbs)	Hub Length (inch)	Axle Bore with Spanner/Top Hat (inch)	Type of Bearing
VG-42-BB	4	2	7/8	7/16	800	2-3/16	1/2	
VG-52-BB	5	2	7/8	7/16	1500	2-3/16	1/2	
VG-62-BB	6	2	7/8	7/16	1600	2-3/16	1/2	
VG-63-BB	6	3	1-3/8	11/16	3000	3-1/4	3/4	
VG-82-BB	8	2	7/8	7/16	2000	2-3/16	1/2	
VG-83-BB	8	3	1-3/8	11/16	3500	3-1/4	3/4	
VG-103-BB	10	3	1-3/8	11/16	5000	3-1/4	3/4 & 1	
VG-123-BB	12	3	1-3/8	11/16	6000	3-1/4	3/4 & 1	

★ Please Change Suffix to 'RB' while ordering wheels fitted with Roller Bearings

★ Please change Suffix to 'TRB' while ordering wheels fitted with Tapered Roller Bearings

VG-DF Series Dropped Forged V-Groove Steel Wheels

Muvtons drop forged V Groove wheels are hot forged from alloy steel and can be used in the roughest of applications on the poorest of floors. These are virtually indestructible within their capacity range. Tread faces are precision machined with a 90° V-groove for operation on inverted angle iron tracks. These wheels offer high abrasion and oil resistance. Wheel Bearing options: All wheels are available with precision ball bearings, tapered roller bearings or roller bearings. Temperature range: -150° F to +800° F



Part No.	Wheel Dia (inch)	Tread Width (inch)	Width Of Groove (inch)	Depth Of Groove (inch)	Load Capacity (Lbs)	Hub Length (inch)	Axle Bore with Spanner/Top Hat (inch)	Type of Bearing
VG-DF-62-BB	6	2	7/8	7/16	2500	2-3/16	1/2	
VG-DF-63-BB	6	3	1-3/8	11/16	6500	3-1/4	3/4 & 1	
VG-DF-82-BB	8	2	7/8	7/16	5000	2-3/16	3/4	
VG-DF-83-BB	8	3	1-3/8	11/16	7000	3-1/4	3/4 & 1	
VG-DF-103-BB	10	3	1-3/8	11/16	10000	3-1/4	3/4 & 1	

★ Please Change Suffix to 'RB' while ordering wheels fitted with Roller Bearings

★ Please change Suffix to 'TRB' while ordering wheels fitted with Tapered Roller Bearings

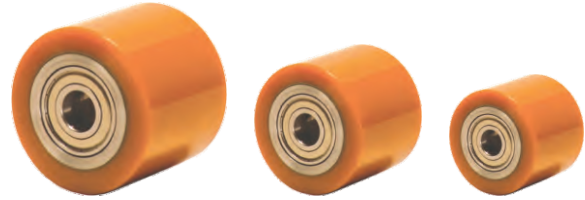


MUVTONS



SAS Series Heavy Duty Pallet Truck Rollers

- High Load Capacity Liquid Cast Premium Polyurethane Wheels 93 ± 3 Shore A
- Polyurethane firmly bonded to precision machined Cast Iron Core
- Low rolling resistance; Smooth and Noiseless running.
- Non-Marking and floor protective.
- High Abrasion, Cut and Tear resistant
- 100% tested and guaranteed against Bond Failures.
- Bearing Options:- Precision Ball Bearings; Tapered Roller Bearings
Roller Bearings
- Temperature Range: -40° F to +180° F



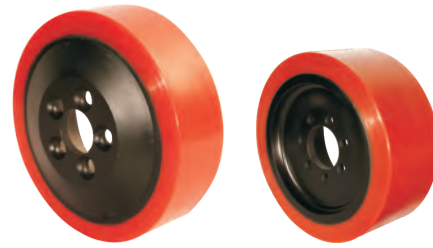
Part No.	Wheel Dia (mm)	Tread Width (mm)	Hub Length (mm)	Bore (mm)	Type of Bearing	Load Capacity
SAS-7540-BB20	75	40	40	20		900
SAS-7562-BB20	75	62	62	20		1300
SAS-7595-BB20	75	95	95	20		1550
SAS-8070-BB20	80	70	70	20		1300
SAS-8260-BB20	82	60	60	20		1200
SAS-8270-BB20	82	70	70	20		1300
SAS-8298-BB20	82	98	98	20		1750
SAS-8560-BB20	85	60	60	20		1200
SAS-8570-BB20	85	70	70	20		1300
SAS-8575-BB20	85	75	75	20		1450
SAS-8580-BB20	85	80	80	20		1550
SAS-8590-BB20	85	90	90	20		1750
SAS-85100-BB20	85	100	100	20		1850
SAS-85110-BB20	85	110	110	20		2000

★ Please Change Suffix to 'RB' while ordering wheels fitted with Roller Bearings

★ Please change Suffix to 'TRB' while ordering wheels fitted with Tapered Roller Bearings

SAS Series Heavy Duty Wheels for Lift Trucks

- High Load Capacity Liquid Cast Premium Polyurethane Wheels 93 ± 3 Shore A
- Polyurethane firmly bonded to precision machined Cast Iron Core
- Low rolling resistance; Smooth and Noiseless running.
- Non-Marking and floor protective.
- High Abrasion, Cut and Tear resistant
- 100% tested and guaranteed against Bond Failures.
- Bearing Options:- Precision Ball Bearings; Tapered Roller Bearings
Roller Bearings
- Temperature Range: -40° F to +180° F



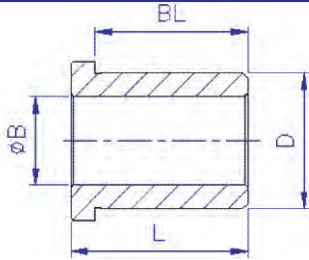
Part No.	Wheel Dia (mm)	Tread Width (mm)	Center Bore (mm)	Hole P.C.D. (mm)	No. of Holes	Bolt Hole Dia
SAS-23070-45-5	230	70	45	70	5	14
SAS-23075-80-6	230	75	80	112	6	14
SAS-23090-30-6	230	90	30	65	6	13
SAS-25075-80-5	250	75	80	112	5	16
SAS-25575-80-4	255	75	80	112	4	15
SAS-300100-80-5	300	100	80	112	5	18.5
SAS-343114-80-7	343	114	80	112	7	18.5
SAS-343140-80-7	343	140	80	112	7	18.5

★ Please Change Suffix to 'RB' while ordering wheels fitted with Roller Bearings

★ Please change Suffix to 'TRB' while ordering wheels fitted with Tapered Roller Bearings

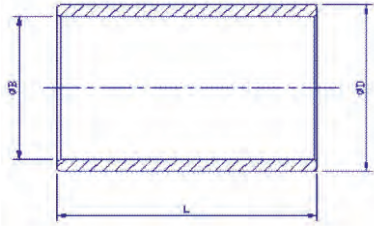


TOP HATS for fitment of wheels equipped with Precision Ball Bearings



Part No.	Axle Dia (inch)	Wheel Hub Length (inch)	Ball Bearing Bore D (inch)	Axle Bore B (inch)	Bearing Length BL (inch)	Total Length L (inch)	Suitable For Castor Series
TH-1220-20-32	1/2	1-5/8	0.787" (20 mm)	1/2	0.8070	1.279	GHR GHKU
TH-1220-28-32	1/2	2-3/16	0.787" (20 mm)	1/2	1.102	1.279	GHK-DBR GHK-BB GGSU U20
TH-1930-35-45	3/4	2-3/4	1.181" (30 mm)	3/4	1.375	1.77	GRDU U25
TH-1930-41-45	3/4	3-1/4	1.181" (30 mm)	3/4	1.624	1.77	U30 GAD
TH-2532-35-45	1	2-3/4	1.250"	1	1.375	1.77	GTB (3")
TH-2532-41-45	1	3-1/4	1.250"	1	1.624	1.77	U100
TH-2532-54-57	1	4-1/4	1.250"	1	2.125	2.25	GTB (4")
TH-3240-35-45	1-1/4	3-1/4	1.575" (40 mm)	1-1/4	1.624	1.77	U150, U150D (3")
TH-3240-54-57	1-1/4	4-1/4	1.575" (40 mm)	1-1/4	2.125	2.25	U150, U150D (4")

SPANNER BUSHING



Part No.	Dia D (inch)	Bore B (inch)	Length L (inch)	Fits In Castor Series
SB-1912-48	3/4	1/2	1.875	GHR
SB-1912-62	3/4	1/2	2.438	GHKU
SB-1912-76	3/4	1/2	3	GHK-DBR
				GHK BB
				GGSU
				U20
SB-1916-62	3/4	0.625	2.438	AB
SB-2519-76	1"	3/4	3	GRDU, GAD
				U25
SB-2519-89	1"	3/4	3.50	U30
SB-3225-89	1.25	1	3.5	GTB
				U100
SB-3225-114	1.25	1	4.563	GTB
SB-3832-89	1.50	1.25	3.5	U150, U150D
SB-3832-114	1.50	1.25	4.583	



AXLE KITS



Part No.	Axle Dia (inch)	Length (inch)	Nut Type	Nut Size	Fits Castor Series
AXL-1295-NY-UNF	1/2	3-3/4	NYLOC	1/2" UNF	GHR GHKU GHK-DBR GHK-BB GGSU U20
AXL-1295-SS-NY-UNF	1/2	3-3/4	NYLOC	1/2" UNF	GHKU-SS
AXL-19133-SN-UNF	3/4	5-1/4	SLOTTED NUT	3/4" UNF	GRDU GAD U25 U30
AXL-25165-SN-UNF	1	6-1/2	SLOTTED NUT	1" UNF	GTB U100
AXL-32170-SN-UNF	1-1/4	6-3/4	SLOTTED NUT	1-1/4" UNF	U150
AXL-32248-SN-UNF	1-1/4	9-3/4	SLOTTED NUT	1-1/4" UNF	U150D

★ Axles supplied with slotted nuts are furnished with cotter pins.