



Kingpin Type Casters Spring Loaded

**Acorn Industrial Products Co
520 Hertzog Boulevard
King of Prussia, PA 19406
Phone 800-523-5474
Fax 800-782-6780
E-Mail acorn@acornindprod.com**

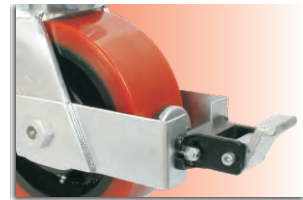
INDUSTRIALS



U100 SERIES



Swivel Head Section



Wheel Face Brake



Directional Lock

10,000 Lbs. Load Capacity Forged Kingpin Type Casters

Single piece Drop Forged AISI 1045 Steel Top Plate -3/4" thick with an Integrally Forged Kingpin

Forged AISI 1045 Steel Fork Base

Swivel Load Bearing- Independent 5" dia precision thrust ball bearing

Secondary Load Bearing: 1-1/4" Bore Tapered Roller Bearing for superior swiveling

Integrally forged 1-1/4" dia Kingpin UNF threaded with slotted nut arrangement for fine adjustment of swivel movement

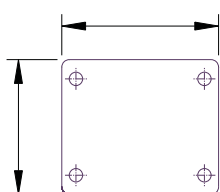
3/8" thick x 4" wide fork legs Cylindrically Formed and Robotically Welded Inside and Outside

1" Wheel axle

4 Position Directional Lock Slots

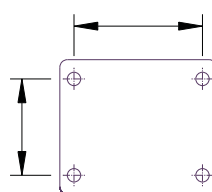
Finish : Bright Zinc Plated

Top Plate



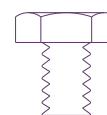
6-1/4" x 7-1/4"

Bolt Hole Centers



4-1/2" x 6"

Attaching Bolt Size



1/2"



'U100' SERIES CASTERS WITH 'SAS' SERIES HIGH LOAD CAPACITY POLYURETHANE WHEELS

- High Load Capacity Liquid Cast Premium Polyurethane Wheels 93 ± 3 Shore A
- Polyurethane firmly bonded to precision machined Cast Iron Core
- Low rolling resistance; Smooth and Noiseless running.
- Non-Marking and floor protective.
- High Abrasion, Cut and Tear resistant
- 100% tested and guaranteed against Bond Failures.
- Bearing Options:- Precision Ball Bearings; Tapered Roller Bearings
Roller Bearings
- Temperature Range: -40° F to +180° F



Part No. Swivel Caster	Part No. Swivel with Wheel Brake	Part No. Rigid Caster	Wheel Dia (inch)	Tread Width (inch)	Load Capacity (Lbs)	Overall Height (inch)	Swivel Radius (inch)	Swivel Radius with wheel face brake
U100-63S-SAS	U100-63S-SAS-WFB	U100-63R-SAS	6	3	2300	8-1/2	5-1/2	12
U100-83S-SAS	U100-83S-SAS-WFB	U100-83R-SAS	8	3	3100	10-1/2	6-1/2	13
U100-84S-SAS	U100-84S-SAS-WFB	U100-84R-SAS	8	4	4000	10-1/2	6-1/2	13
U100-103S-SAS	U100-103S-SAS-WFB	U100-103R-SAS	10	3	4000	12-1/2	7-3/4	14-1/4
U100-104S-SAS	U100-104S-SAS-WFB	U100-104R-SAS	10	4	4850	12-1/2	7-3/4	14-1/4
U100-123S-SAS	U100-123S-SAS-WFB	U100-123R-SAS	12	3	4850	15-1/2	8-1/2	15
U100-124S-SAS	U100-124S-SAS-WFB	U100-124R-SAS	12	4	6200	15-1/2	8-1/2	15

'U100' SERIES CASTERS WITH 'SZS' SERIES THICK TREADED ELASTIC URETHANE WHEELS

- Elastic 85±3 Shore A Liquid Cast Polyurethane firmly bonded to Cast Iron Core
- Reduced noise due to cushioning of loads,
Lively Polyurethane allows wheels to Flex and Roll over debris
- Excellent for power towing applications
- Non-Marking and floor protective.
- 100% Tested and Guaranteed against bond failures
- Bearing Options:- Precision Ball Bearings; Tapered Roller Bearings
Roller Bearings;
- Temperature Range:- -40° F to + 180° F



Part No. Swivel Caster	Part No. Swivel with Wheel Brake	Part No. Rigid Caster	Wheel Dia (inch)	Tread Width (inch)	Load Capacity (Lbs)	Overall Height (inch)	Swivel Radius (inch)	Swivel Radius with wheel face brake (inch)
U100-63S-SZS	U100-63S-SZS-WFB	U100-63R-SZS	6	3	1800	8-1/2	5-1/2	12
U100-83S-SZS	U100-83S-SZS-WFB	U100-83R-SZS	8	3	2800	10-1/2	6-1/2	13
U100-84S-SZS	U100-84S-SZS-WFB	U100-84R-SZS	8	4	3000	10-1/2	6-1/2	13
U100-103S-SZS	U100-103S-SZS-WFB	U100-103R-SZS	10	3	3000	12-1/2	7-3/4	14-1/4
U100-104S-SZS	U100-104S-SZS-WFB	U100-104R-SZS	10	4	3650	12-1/2	7-3/4	14-1/4
U100-123S-SZS	U100-123S-SZS-WFB	U100-123R-SZS	12	3	3200	15-1/2	8-1/2	15
U100-124S-SZS	U100-124S-SZS-WFB	U100-124R-SZS	12	4	4600	15-1/2	8-1/2	15

'U100' SERIES CASTERS WITH 'SFS' SERIES SOLID ELASTOMER WHEELS

- The Ultimate Real Solid Elastomer Wheels exclusively developed by Muvtons
Premium Liquid Cast 73 ± 3 Shore D Polyurethane locked mechanically to a non-corrosive metallic core
that holds the precision bearings and provides structural rigidity.
- Resist compression set and provide excellent resilience for easy movement
- Non-Marking and floor protective
- Can be used for corrosive applications with suitable bearings.
- 100% Tested and Guaranteed against failures
- Bearing Options:- Precision Ball Bearings; Tapered Roller Bearings
Roller Bearings
- Temperature Range:- -40° F to + 180° F



Part No. Swivel Caster	Part No. Swivel with Wheel Brake	Part No. Rigid Caster	Wheel Dia (inch)	Tread Width (inch)	Load Capacity (Lbs)	Overall Height (inch)	Swivel Radius (inch)	Swivel Radius with wheel face brake (inch)
U100-63S-SFS	U100-63S-SFS-WFB	U100-63R-SFS	6	3	2500	8-1/2	5-1/2	12
U100-83S-SFS	U100-83S-SFS-WFB	U100-83R-SFS	8	3	2500	10-1/2	6-1/2	13
U100-84S-SFS	U100-84S-SFS-WFB	U100-84R-SFS	8	4	3800	10-1/2	6-1/2	13
U100-103S-SFS	U100-103S-SFS-WFB	U100-103R-SFS	10	3	3000	12-1/2	7-3/4	14-1/4
U100-104S-SFS	U100-104S-SFS-WFB	U100-104R-SFS	10	4	4200	12-1/2	7-3/4	14-1/4
U100-123S-SFS	U100-123S-SFS-WFB	U100-123R-SFS	12	3	3400	15-1/2	8-1/2	15
U100-124S-SFS	U100-124S-SFS-WFB	U100-124R-SFS	12	4	6150	15-1/2	8-1/2	15



'U100' SERIES CASTERS WITH 'SEB' SERIES HEAVY DUTY MOLDON RUBBER WHEELS

- Elastic Rubber tired wheels chemically bonded to precision machined Cast Iron Cores.
- Highly resilient 75 ± 5 Shore A rubber.
- Smooth and silent running in power towing applications.
- Bearing Options:- Precision Ball Bearings; Tapered Roller Bearings
Roller Bearings
- Temperature Range: -40° F to +180° F



Part No. Swivel Caster	Part No. Swivel with Wheel Brake	Part No. Rigid Caster	Wheel Dia (inch)	Tread Width (inch)	Load Capacity (Lbs)	Overall Height (inch)	Swivel Radius (inch)	Swivel Radius with wheel face brake (inch)
U100-63S-SEB	U100-63S-SEB-WFB	U100-63R-SEB	6	3	950	8-1/2	5-1/2	12
U100-83S-SEB	U100-83S-SEB-WFB	U100-83R-SEB	8	3	1200	10-1/2	6-1/2	13
U100-84S-SEB	U100-84S-SEB-WFB	U100-84R-SEB	8	4	1500	10-1/2	6-1/2	13
U100-103S-SEB	U100-103S-SEB-WFB	U100-103R-SEB	10	3	1650	12-1/2	7-3/4	14-1/4
U100-104S-SEB	U100-104S-SEB-WFB	U100-104R-SEB	10	4	2100	12-1/2	7-3/4	14-1/4
U100-123S-SEB	U100-123S-SEB-WFB	U100-123R-SEB	12	3	1850	15-1/2	8-1/2	15
U100-124S-SEB	U100-124S-SEB-WFB	U100-124R-SEB	12	4	2200	15-1/2	8-1/2	15

'U100' SERIES CASTERS WITH 'MCI' SERIES CAST IRON WHEELS

- Special Grey cast iron wheels - solid core construction
- Fully machined tread faces – crown treaded for easy maneuverability.
- High abrasion and oil resistant
- Can be used upto 800° F with appropriate wheel bearings.
- Bearing Options:- Precision Ball Bearings; Tapered Roller Bearings
Roller Bearings
- Temperature Range: upto 800° F with appropriate bearings



Part No. Swivel Caster	Part No. Swivel with Wheel Brake	Part No. Rigid Caster	Wheel Dia (inch)	Tread Width (inch)	Load Capacity (Lbs)	Overall Height (inch)	Swivel Radius (inch)	Swivel Radius with wheel face brake (inch)
U100-63S-MCI	U100-63S-MCI-WFB	U100-63R-MCI	6	3	2400	8-1/2	5-1/2	12
U100-83S-MCI	U100-83S-MCI-WFB	U100-83R-MCI	8	3	3500	10-1/2	6-1/2	13
U100-84S-MCI	U100-84S-MCI-WFB	U100-84R-MCI	8	4	5000	10-1/2	6-1/2	13
U100-103S-MCI	U100-103S-MCI-WFB	U100-103R-MCI	10	3	4000	12-1/2	7-3/4	14-1/4
U100-104S-MCI	U100-104S-MCI-WFB	U100-104R-MCI	10	4	6000	12-1/2	7-3/4	14-1/4
U100-123S-MCI	U100-123S-MCI-WFB	U100-123R-MCI	12	3	4500	15-1/2	8-1/2	15
U100-124S-MCI	U100-124S-MCI-WFB	U100-124R-MCI	12	4	7900	15-1/2	8-1/2	15

'U100' SERIES CASTERS WITH 'MDW' SERIES DUCTILE STEEL WHEELS

- Special Ductile Cast Steel wheels with fully machined tread face
- Crown Tread Face makes maneuverability easy
- Higher Load Capacities compared to Cast Iron Wheels
- Suitable for extra heavy loads towed in punishing conditions.
- High abrasion and oil resistance
- Bearing Options:- Precision Ball Bearings; Tapered Roller Bearings
Roller Bearings
- Temperature Range: upto 800° F with appropriate bearings



Part No. Swivel Caster	Part No. Swivel with Wheel Brake	Part No. Rigid Caster	Wheel Dia (inch)	Tread Width (inch)	Load Capacity (Lbs)	Overall Height (inch)	Swivel Radius (inch)	Swivel Radius with wheel face brake (inch)
U100-63S-MDW	U100-63S-MDW-WFB	U100-63R-MDW	6	3	3300	8-1/2	5-1/2	12
U100-83S-MDW	U100-83S-MDW-WFB	U100-83R-MDW	8	3	5500	10-1/2	6-1/2	13
U100-84S-MDW	U100-84S-MDW-WFB	U100-84R-MDW	8	4	8000	10-1/2	6-1/2	13
U100-103S-MDW	U100-103S-MDW-WFB	U100-103R-MDW	10	3	6000	12-1/2	7-3/4	14-1/4
U100-104S-MDW	U100-104S-MDW-WFB	U100-104R-MDW	10	4	10000	12-1/2	7-3/4	14-1/4
U100-123S-MDW	U100-123S-MDW-WFB	U100-123R-MDW	12	3	6500	15-1/2	8-1/2	15
U100-124S-MDW	U100-124S-MDW-WFB	U100-124R-MDW	12	4	10000	15-1/2	8-1/2	15



'U100' SERIES CASTERS WITH 'DF' SERIES DROP FORGED STEEL WHEELS

- Hot forged from AISI 1045 steel with fully machined tread faces
- Virtually indestructible and easy to maneuver
- High abrasion and oil resistant
- Can be used in the roughest of applications on the poorest of floors
- Bearing Options:- Precision Ball Bearings; Tapered Roller Bearings
Roller Bearings
- Temperature Range: -150° F upto 800° F with appropriate bearings



Part No. Swivel Caster	Part No. Swivel with Wheel Brake	Part No. Rigid Caster	Wheel Dia (inch)	Tread Width (inch)	Load Capacity (Lbs)	Overall Height (inch)	Swivel Radius (inch)	Swivel Radius with wheel face brake (inch)
U100-63S-DF	U100-63S-DF-WFB	U100-63R-DF	6	3	6600	8-1/2	5-1/2	12
U100-83S-DF	U100-83S-DF-WFB	U100-83R-DF	8	3	6800	10-1/2	6-1/2	13
U100-84S-DF	U100-84S-DF-WFB	U100-84R-DF	8	4	10000	10-1/2	6-1/2	13
U100-103S-DF	U100-103S-DF-WFB	U100-103R-DF	10	3	10000	12-1/2	7-3/4	14-1/4
U100-104S-DF	U100-104S-DF-WFB	U100-104R-DF	10	4	10000	12-1/2	7-3/4	14-1/4
U100-123S-DF	U100-123S-DF-WFB	U100-123R-DF	12	3	10000	15-1/2	8-1/2	15
U100-124S-DF	U100-124S-DF-WFB	U100-124R-DF	12	4	10000	15-1/2	8-1/2	15

'U100' SERIES CASTERS WITH MUVTUFF 'MCNY' SERIES CAST POLY WHEELS

- Machined from Tough, High Impact resistant Cast Polyamide
- Ultimate choice for Extremely High Load applications to replace metallic wheels
- Offer very high Abrasion resistance and very low rolling resistance under extreme loads
- Resistant to Salt, Grease, Alcohol and mild acids - can be used in corrosive applications with appropriate bearings
- Bearing Options:- Precision Ball Bearings; Tapered Roller Bearings
Roller Bearings
- Temperature Range: -40° F to +180° F with appropriate bearings



Part No. Swivel Caster	Part No. Swivel with Wheel Brake	Part No. Rigid Caster	Wheel Dia (inch)	Tread Width (inch)	Load Capacity (Lbs)	Overall Height (inch)	Swivel Radius (inch)	Swivel Radius with wheel face brake (inch)
U100-63S-MCNY	U100-63S-MCNY-WFB	U100-63R-MCNY	6	3	6000	8-1/2	5-1/2	12
U100-83S-MCNY	U100-83S-MCNY-WFB	U100-83R-MCNY	8	3	10000	10-1/2	6-1/2	13
U100-84S-MCNY	U100-84S-MCNY-WFB	U100-84R-MCNY	8	4	10000	10-1/2	6-1/2	13
U100-103S-MCNY	U100-103S-MCNY-WFB	U100-103R-MCNY	10	3	10000	12-1/2	7-3/4	14-1/4
U100-104S-MCNY	U100-104S-MCNY-WFB	U100-104R-MCNY	10	4	10000	12-1/2	7-3/4	14-1/4
U100-123S-MCNY	U100-123S-MCNY-WFB	U100-123R-MCNY	12	3	10000	15-1/2	8-1/2	15
U100-124S-MCNY	U100-124S-MCNY-WFB	U100-124R-MCNY	12	4	10000	15-1/2	8-1/2	15A



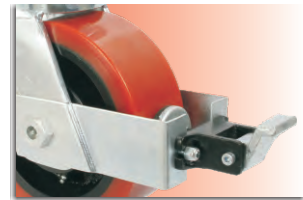


U150

SERIES



Swivel Head Section



Wheel Face Brake



Directional Lock

15,000 Lbs. Load Capacity Forged Kingpin Type Casters

Single piece Drop Forged AISI 1045 Steel Top Plate -1" thick with an Integrally Forged Kingpin

Forged AISI 1045 Steel Fork Base

Swivel Load Bearing- Independent 7" dia precision thrust ball bearing

Secondary Load Bearing: 1-1/4" Bore Tapered Roller Bearing for superior swiveling

Integrally forged 1-1/4" dia Kingpin UNF threaded with slotted nut arrangement for fine adjustment of swivel movement

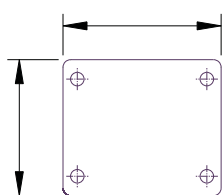
1/2" thick x 4" wide fork legs Cylindrically Formed and Robotically Welded Inside and Outside

1-1/4" Wheel axle

4 Position Directional Lock Slots

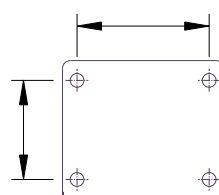
Finish : Bright Zinc Plated

Top Plate



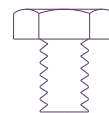
8-1/2" x 8-1/2"

Bolt Hole Centers



7" x 7"

Attaching Bolt Size



5/8"



'U150' SERIES CASTERS WITH 'SAS' SERIES HIGH LOAD CAPACITY POLYURETHANE WHEELS

- High Load Capacity Liquid Cast Premium Polyurethane Wheels 93 ± 3 Shore A
- Polyurethane firmly bonded to precision machined Cast Iron Core
- Low rolling resistance; Smooth and Noiseless running.
- Non-Marking and floor protective.
- High Abrasion, Cut and Tear resistant
- 100% tested and guaranteed against Bond Failures.
- Bearing Options:- Precision Ball Bearings; Tapered Roller Bearings
Roller Bearings
- Temperature Range: -40° F to +180° F



Part No. Swivel Caster	Part No. Swivel with Wheel Brake	Part No. Rigid Caster	Wheel Dia (inch)	Tread Width (inch)	Load Capacity (Lbs)	Overall Height (inch)	Swivel Radius (inch)	Swivel Radius with wheel face brake (inch)
U150-63S-SAS	U150-63S-SAS-WFB	U150-63R-SAS	6	3	2300	9	5-1/4	11-3/4
U150-84S-SAS	U150-84S-SAS-WFB	U150-84R-SAS	8	4	4000	11	6-1/2	13
U150-104S-SAS	U150-104S-SAS-WFB	U150-104R-SAS	10	4	4800	13	7-3/4	14-1/4
U150-124S-SAS	U150-124S-SAS-WFB	U150-124R-SAS	12	4	6100	15-1/2	9-1/2	16

'U150' SERIES CASTERS WITH 'SZS' SERIES THICK TREADED ELASTIC URETHANE WHEELS

- Elastic 85±3 Shore A Liquid Cast Polyurethane firmly bonded to Cast Iron Core
- Reduced noise due to cushioning of loads,
Lively Polyurethane allows wheels to Flex and Roll over debris
- Excellent for power towing applications
- Non-Marking and floor protective.
- 100% Tested and Guaranteed against bond failures
- Bearing Options:- Precision Ball Bearings; Tapered Roller Bearings
Roller Bearings;
- Temperature Range:- -40° F to + 180° F



Part No. Swivel Caster	Part No. Swivel with Wheel Brake	Part No. Rigid Caster	Wheel Dia (inch)	Tread Width (inch)	Load Capacity (Lbs)	Overall Height (inch)	Swivel Radius (inch)	Swivel Radius with wheel face brake (inch)
U150-63S-SZS	U150-63S-SZS-WFB	U150-63R-SZS	6	3	1800	9	5-1/4	11-3/4
U150-84S-SZS	U150-84S-SZS-WFB	U150-84R-SZS	8	4	3000	11	6-1/2	13
U150-104S-SZS	U150-104S-SZS-WFB	U150-104R-SZS	10	4	3650	13	7-3/4	14-1/4
U150-124S-SZS	U150-124S-SZS-WFB	U150-124R-SZS	12	4	4600	15-1/2	9-1/2	16

'U150' SERIES CASTERS WITH 'SFS' SERIES SOLID ELASTOMER WHEELS

- The Ultimate Real Solid Elastomer Wheels exclusively developed by Muvtons
- Premium Liquid Cast 73 ± 3 Shore D Polyurethane locked mechanically to a non-corrosive metallic core that holds the precision bearings and provides structural rigidity.
- Resist compression set and provide excellent resilience for easy movement
- Non-Marking and floor protective
- Can be used for corrosive applications with suitable bearings.
- 100% Tested and Guaranteed against failures
- Bearing Options:- Precision Ball Bearings; Tapered Roller Bearings
Roller Bearings
- Temperature Range:- -40° F to + 180° F



Part No. Swivel Caster	Part No. Swivel with Wheel Brake	Part No. Rigid Caster	Wheel Dia (inch)	Tread Width (inch)	Load Capacity (Lbs)	Overall Height (inch)	Swivel Radius (inch)	Swivel Radius with wheel face brake (inch)
U150-63S-SFS	U150-63S-SFS-WFB	U150-63R-SFS	6	3	2500	9	5-1/4	11-3/4
U150-84S-SFS	U150-84S-SFS-WFB	U150-84R-SFS	8	4	3800	11	6-1/2	13
U150-104S-SFS	U150-104S-SFS-WFB	U150-104R-SFS	10	4	4200	13	7-3/4	14-1/4
U150-124S-SFS	U150-124S-SFS-WFB	U150-124R-SFS	12	4	4500	15-1/2	9-1/2	16



'U150' SERIES CASTERS WITH 'SEB' SERIES HEAVY DUTY MOLDON RUBBER WHEELS

- Elastic Rubber tired wheels chemically bonded to precision machined Cast Iron Cores.
- Highly resilient 75 ± 5 Shore A rubber.
- Smooth and silent running in power towing applications.
- Bearing Options:- Precision Ball Bearings; Tapered Roller Bearings
Roller Bearings
- Temperature Range: -40° F to +180 ° F



Part No. Swivel Caster	Part No. Swivel with Wheel Brake	Part No. Rigid Caster	Wheel Dia (inch)	Tread Width (inch)	Load Capacity (Lbs)	Overall Height (inch)	Swivel Radius (inch)	Swivel Radius with wheel face brake (inch)
U150-84S-SEB	U150-84S-SEB-WFB	U150-84R-SEB	8	4	1500	11	6-1/2	13
U150-104S-SEB	U150-104S-SEB-WFB	U150-104R-SEB	10	4	2100	13	7-3/4	14-1/4
U150-124S-SEB	U150-124S-SEB-WFB	U150-124R-SEB	12	4	2500	15-1/2	9-1/2	16

'U150' SERIES CASTERS WITH 'MCI' SERIES CAST IRON WHEELS

- Special Grey cast iron wheels - solid core construction
- Fully machined tread faces – crown treaded for easy maneuverability.
- High abrasion and oil resistant
- Can be used upto 800° F with appropriate wheel bearings.
- Bearing Options:- Precision Ball Bearings; Tapered Roller Bearings
Roller Bearings
- Temperature Range: upto 800° F with appropriate bearings



Part No. Swivel Caster	Part No. Swivel with Wheel Brake	Part No. Rigid Caster	Wheel Dia (inch)	Tread Width (inch)	Load Capacity (Lbs)	Overall Height (inch)	Swivel Radius (inch)	Swivel Radius with wheel face brake (inch)
U150-63S-MCI	U150-63S-MCI-WFB	U150-63R-MCI	6	3	3000	9	5-1/4	11-3/4
U150-84S-MCI	U150-84S-MCI-WFB	U150-84R-MCI	8	4	5000	11	6-1/2	13
U150-104S-MCI	U150-104S-MCI-WFB	U150-104R-MCI	10	4	6000	13	7-3/4	14-1/4
U150-124S-MCI	U150-124S-MCI-WFB	U150-124R-MCI	12	4	8000	15-1/2	9-1/2	16

'U150' SERIES CASTERS WITH 'MDW' SERIES DUCTILE STEEL WHEELS

- Special Ductile Cast Steel wheels with fully machined tread face
- Crown Tread Face makes maneuverability easy
- Higher Load Capacities compared to Cast Iron Wheels
- Suitable for extra heavy loads towed in punishing conditions.
- High abrasion and oil resistance
- Bearing Options:- Precision Ball Bearings; Tapered Roller Bearings
Roller Bearings
- Temperature Range: upto 800° F with appropriate bearings



Part No. Swivel Caster	Part No. Swivel with Wheel Brake	Part No. Rigid Caster	Wheel Dia (inch)	Tread Width (inch)	Load Capacity (Lbs)	Overall Height (inch)	Swivel Radius (inch)	Swivel Radius with wheel face brake (inch)
U150-63S-MDW	U150-63S-MDW-WFB	U150-63R-MDW	6	3	3300	9	5-1/4	11-3/4
U150-84S-MDW	U150-84S-MDW-WFB	U150-84R-MDW	8	4	8000	11	6-1/2	13
U150-104S-MDW	U150-104S-MDW-WFB	U150-104R-MDW	10	4	12000	13	7-3/4	14-1/4
U150-124S-MDW	U150-124S-MDW-WFB	U150-124R-MDW	12	4	12000	15-1/2	9-1/2	16



'U150' SERIES CASTERS WITH 'DF' SERIES DROP FORGED STEEL WHEELS

- Hot forged from AISI 1045 steel with fully machined tread faces
- Virtually indestructible and easy to maneuver
- High abrasion and oil resistant
- Can be used in the roughest of applications on the poorest of floors
- Bearing Options:- Precision Ball Bearings; Tapered Roller Bearings
Roller Bearings
- Temperature Range: -150° F upto 800° F with appropriate bearings



Part No. Swivel Caster	Part No. Swivel with Wheel Brake	Part No. Rigid Caster	Wheel Dia (inch)	Tread Width (inch)	Load Capacity (Lbs)	Overall Height (inch)	Swivel Radius (inch)	Swivel Radius with wheel face brake (inch)
U150-63S-DF	U150-63S-DF-WFB	U150-63R-DF	6	3	6600	9	5-1/4	11-3/4
U150-84S-DF	U150-84S-DF-WFB	U150-84R-DF	8	4	15000	11	6-1/2	13
U150-104S-DF	U150-104S-DF-WFB	U150-104R-DF	10	4	15000	13	7-3/4	14-1/4
U150-124S-DF	U150-124S-DF-WFB	U150-124R-DF	12	4	15000	15-1/2	9-1/2	16

'U150' SERIES CASTERS WITH MUVTUFF 'MCNY' SERIES CAST POLY WHEELS

- Machined from Tough, High Impact resistant Cast Polyamide
- Ultimate choice for Extremely High Load applications to replace metallic wheels
- Offer very high Abrasion resistance and very low rolling resistance under extreme loads
- Resistant to Salt, Grease, Alcohol and mild acids - can be used in corrosive applications with appropriate bearings
- Bearing Options:- Precision Ball Bearings; Tapered Roller Bearings
Roller Bearings
- Temperature Range: -40° F to +180° F with appropriate bearings



Part No. Swivel Caster	Part No. Swivel with Wheel Brake	Part No. Rigid Caster	Wheel Dia (inch)	Tread Width (inch)	Load Capacity (Lbs)	Overall Height (inch)	Swivel Radius (inch)	Swivel Radius with wheel face brake (inch)
U150-63S-MCNY	U150-63S-MCNY-WFB	U150-63R-MCNY	6	3	6000	9	5-1/4	11-3/4
U150-84S-MCNY	U150-84S-MCNY-WFB	U150-84R-MCNY	8	4	12000	11	6-1/2	13
U150-104S-MCNY	U150-104S-MCNY-WFB	U150-104R-MCNY	10	4	15000	13	7-3/4	14-1/4
U150-124S-MCNY	U150-124S-MCNY-WFB	U150-124R-MCNY	12	4	15000	15-1/2	9-1/2	16



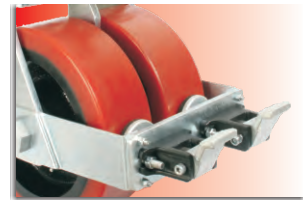


U150D

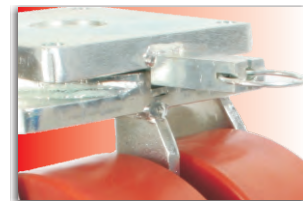
SERIES



Swivel Head Section



Wheel Face Brake



Directional Lock

15,000 Lbs. Load Capacity Forged Kingpin Type Dual Wheel Casters

Single piece Drop Forged AISI 1045 Steel Top Plate -1" thick with an Integrally Forged Kingpin

Forged AISI 1045 Steel Fork Base

Swivel Load Bearing- Independent 7" dia precision thrust ball bearing

Secondary Load Bearing: 1-1/4" Bore Tapered Roller Bearing for superior swiveling

Integrally forged 1-1/4" dia Kingpin UNF threaded with slotted nut arrangement for fine adjustment of swivel movement

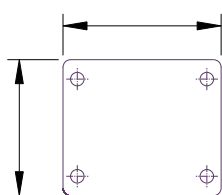
1/2" thick x 4" wide fork legs Cylindrically Formed and Robotically Welded Inside and Outside

1-1/4" Wheel axle

4 Position Directional Lock Slots

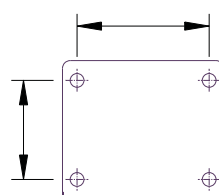
Finish : Bright Zinc Plated

Top Plate



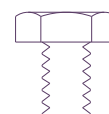
8-1/2" x 8-1/2"

Bolt Hole Centers



7" x 7"

Attaching Bolt Size



5/8"

U150D Rigid Top Plate Size: 8-1/2" x 11"



'U150D' SERIES DUAL WHEEL CASTERS WITH 'SAS' SERIES HIGH LOAD POLYURETHANE WHEELS

- High Load Capacity Liquid Cast Premium Polyurethane Wheels 93 ± 3 Shore A
- Polyurethane firmly bonded to precision machined Cast Iron Core
- Low rolling resistance; Smooth and Noiseless running.
- Non-Marking and floor protective.
- High Abrasion, Cut and Tear resistant
- 100% tested and guaranteed against Bond Failures.
- Bearing Options:- Precision Ball Bearings; Tapered Roller Bearings
Roller Bearings
- Temperature Range: -40° F to +180° F



Part No. Swivel Caster	Part No. Swivel with Wheel Brake	Part No. Rigid Caster	Wheel Dia (inch)	Tread Width (inch)	Load Capacity (Lbs)	Overall Height (inch)	Swivel Radius (inch)	Swivel Radius with wheel face brake (inch)
U150D-63S-SAS	U150D-63S-SAS-WFB	U150D-63R-SAS	6	3x2	4600	9	6-1/4	12-1/2
U150D-84S-SAS	U150D-84S-SAS-WFB	U150D-84R-SAS	8	4x2	8000	11	7-1/2	14
U150D-104S-SAS	U150D-104S-SAS-WFB	U150D-104R-SAS	10	4x2	9600	13	8-1/2	15-1/4
U150D-124S-SAS	U150D-124S-SAS-WFB	U150D-124R-SAS	12	4x2	12200	15-1/2	10	17

'U150D' DUAL WHEEL CASTERS WITH 'SZS' SERIES THICK TREADED ELASTIC URETHANE WHEELS

- Elastic 85±3 Shore A Liquid Cast Polyurethane firmly bonded to Cast Iron Core
- Reduced noise due to cushioning of loads, Lively Polyurethane allows wheels to 'Flex and Roll' over debris
- Excellent for power towing applications
- Non-Marking and floor protective.
- 100% Tested and Guaranteed against bond failures
- Bearing Options:- Precision Ball Bearings; Tapered Roller Bearings
Roller Bearings;
- Temperature Range:- 40° F to + 180° F



Part No. Swivel Caster	Part No. Swivel with Wheel Brake	Part No. Rigid Caster	Wheel Dia (inch)	Tread Width (inch)	Load Capacity (Lbs)	Overall Height (inch)	Swivel Radius (inch)	Swivel Radius with wheel face brake (inch)
U150D-63S-SZS	U150D-63S-SZS-WFB	U150D-63R-SZS	6	3x2	3600	9	6-1/4	12-1/2
U150D-84S-SZS	U150D-84S-SZS-WFB	U150D-84R-SZS	8	4x2	6000	11	7-1/2	14
U150D-104S-SZS	U150D-104S-SZS-WFB	U150D-104R-SZS	10	4x2	7300	13	8-1/2	15-1/4
U150D-124S-SZS	U150D-124S-SZS-WFB	U150D-124R-SZS	12	4x2	9200	15-1/2	10	17

'U150D' SERIES DUAL WHEEL CASTERS WITH 'SFS' SERIES SOLID ELASTOMER WHEELS

- The Ultimate Real Solid Elastomer Wheels exclusively developed by Muvtons
- Premium Liquid Cast 73 ± 3 Shore D Polyurethane locked mechanically to a non-corrosive metallic core that holds the precision bearings and provides structural rigidity.
- Resist compression set and provide excellent resilience for easy movement
- Non-Marking and floor protective
- Can be used for corrosive applications with suitable bearings.
- 100% Tested and Guaranteed against failures
- Bearing Options:- Precision Ball Bearings; Tapered Roller Bearings
Roller Bearings
- Temperature Range:- 40° F to + 180° F



Part No. Swivel Caster	Part No. Swivel with Wheel Brake	Part No. Rigid Caster	Wheel Dia (inch)	Tread Width (inch)	Load Capacity (Lbs)	Overall Height (inch)	Swivel Radius (inch)	Swivel Radius with wheel face brake (inch)
U150D-63S-SFS	U150D-63S-SFS-WFB	U150D-63R-SFS	6	3x2	5000	9	6-1/4	12-1/2
U150D-84S-SFS	U150D-84S-SFS-WFB	U150D-84R-SFS	8	4x2	7600	11	7-1/2	14
U150D-104S-SFS	U150D-104S-SFS-WFB	U150D-104R-SFS	10	4x2	8400	13	8-1/2	15-1/4
U150D-124S-SFS	U150D-124S-SFS-WFB	U150D-124R-SFS	12	4x2	9000	15-1/2	10	17



'U150D' SERIES DUAL WHEEL CASTERS WITH 'SEB' SERIES HEAVY DUTY RUBBER WHEELS

- Elastic Rubber tired wheels chemically bonded to precision machined Cast Iron Cores.
- Highly resilient 75 ± 5 Shore A rubber.
- Smooth and silent running in power towing applications.
- Bearing Options:- Precision Ball Bearings; Tapered Roller Bearings
Roller Bearings
- Temperature Range: -40° F to +180° F



Part No. Swivel Caster	Part No. Swivel with Wheel Brake	Part No. Rigid Caster	Wheel Dia (inch)	Tread Width (inch)	Load Capacity (Lbs)	Overall Height (inch)	Swivel Radius (inch)	Swivel Radius with wheel face brake (inch)
U150D-84S-SEB	U150D-84S-SEB-WFB	U150D-84R-SEB	8	4x2	3000	11	7-1/2	14
U150D-104S-SEB	U150D-104S-SEB-WFB	U150D-104R-SEB	10	4x2	4200	13	8-1/2	15-1/4
U150D-124S-SEB	U150D-124S-SEB-WFB	U150D-124R-SEB	12	4x2	5000	15-1/2	10	17

'U150D' SERIES DUAL WHEEL CASTERS WITH 'MCI' SERIES CAST IRON WHEELS

- Special Grey cast iron wheels - solid core construction
- Fully machined tread faces – crown treaded for easy maneuverability.
- High abrasion and oil resistant
- Can be used upto 800° F with appropriate wheel bearings.
- Bearing Options:- Precision Ball Bearings; Tapered Roller Bearings
Roller Bearings
- Temperature Range: upto 800° F with appropriate bearings



Part No. Swivel Caster	Part No. Swivel with Wheel Brake	Part No. Rigid Caster	Wheel Dia (inch)	Tread Width (inch)	Load Capacity (Lbs)	Overall Height (inch)	Swivel Radius (inch)	Swivel Radius with wheel face brake (inch)
U150D-63S-MCI	U150D-63S-MCI-WFB	U150D-63R-MCI	6	3x2	6000	9	6-1/4	12-1/2
U150D-84S-MCI	U150D-84S-MCI-WFB	U150D-84R-MCI	8	4x2	10000	11	7-1/2	14
U150D-104S-MCI	U150D-104S-MCI-WFB	U150D-104R-MCI	10	4x2	12000	13	8-1/2	15-1/4
U150D-124S-MCI	U150D-124S-MCI-WFB	U150D-124R-MCI	12	4x2	15000	15-1/2	10	17

'U150D' SERIES DUAL WHEEL CASTERS WITH 'MDW' SERIES DUCTILE STEEL WHEELS

- Special Ductile Cast Steel wheels with fully machined tread face
- Crown Tread Face makes maneuverability easy
- Higher Load Capacities compared to Cast Iron Wheels
- Suitable for extra heavy loads towed in punishing conditions.
- High abrasion and oil resistance
- Bearing Options:- Precision Ball Bearings; Tapered Roller Bearings
Roller Bearings
- Temperature Range: upto 800° F with appropriate bearings



Part No. Swivel Caster	Part No. Swivel with Wheel Brake	Part No. Rigid Caster	Wheel Dia (inch)	Tread Width (inch)	Load Capacity (Lbs)	Overall Height (inch)	Swivel Radius (inch)	Swivel Radius with wheel face brake (inch)
U150D-63S-MDW	U150D-63S-MDW-WFB	U150D-63R-MDW	6	3x2	6600	9	6-1/4	12-1/2
U150D-84S-MDW	U150D-84S-MDW-WFB	U150D-84R-MDW	8	4x2	15000	11	7-1/2	14
U150D-104S-MDW	U150D-104S-MDW-WFB	U150D-104R-MDW	10	4x2	15000	13	8-1/2	15-1/4
U150D-124S-MDW	U150D-124S-MDW-WFB	U150D-124R-MDW	12	4x2	15000	15-1/2	10	17



'U150D' DUAL WHEEL CASTERS WITH 'DF' SERIES DROP FORGED STEEL WHEELS

- Hot forged from AISI 1045 steel with fully machined tread faces
- Virtually indestructible and easy to maneuver
- High abrasion and oil resistant
- Can be used in the roughest of applications on the poorest of floors
- Bearing Options:- Precision Ball Bearings; Tapered Roller Bearings
Roller Bearings
- Temperature Range: -150° F upto 800° F with appropriate bearings



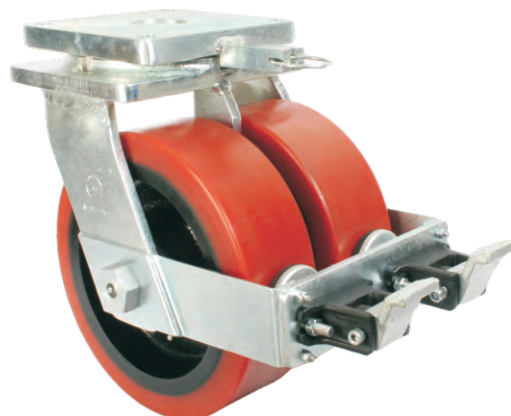
Part No. Swivel Caster	Part No. Swivel with Wheel Brake	Part No. Rigid Caster	Wheel Dia (inch)	Tread Width (inch)	Load Capacity (Lbs)	Overall Height (inch)	Swivel Radius (inch)	Swivel Radius with wheel face brake (inch)
U150D-63S-DF	U150D-63S-DF-WFB	U150D-63R-DF	6	3x2	13200	9	6-1/4	12-1/2
U150D-84S-DF	U150D-84S-DF-WFB	U150D-84R-DF	8	4x2	15000	11	7-1/2	14
U150D-104S-DF	U150D-104S-DF-WFB	U150D-104R-DF	10	4x2	15000	13	8-1/2	15-1/4
U150D-124S-DF	U150D-124S-DF-WFB	U150D-124R-DF	12	4x2	15000	15-1/2	10	17

'U150D' DUAL WHEEL CASTERS WITH MUVTUFF 'MCNY' CAST POLY WHEELS

- Machined from Tough, High Impact resistant Cast Polyamide
- Ultimate choice for Extremely High Load applications to replace metallic wheels
- Offer very high Abrasion resistance and very low rolling resistance under extreme loads
- Resistant to Salt, Grease, Alcohol and mild acids - can be used in corrosive applications with appropriate bearings
- Bearing Options:- Precision Ball Bearings; Tapered Roller Bearings
Roller Bearings
- Temperature Range: -40° F to +180° F with appropriate bearings



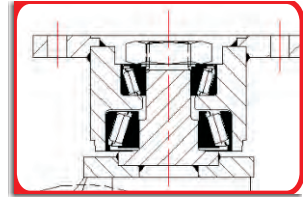
Part No. Swivel Caster	Part No. Swivel with Wheel Brake	Part No. Rigid Caster	Wheel Dia (inch)	Tread Width (inch)	Load Capacity (Lbs)	Overall Height (inch)	Swivel Radius (inch)	Swivel Radius with wheel face brake (inch)
U150D-63S-MCNY	U150D-63S-MCNY-WFB	U150D-63R-MCNY	6	3x2	12000	9	6-1/4	12-1/2
U150D-84S-MCNY	U150D-84S-MCNY-WFB	U150D-84R-MCNY	8	4x2	15000	11	7-1/2	14
U150D-104S-MCNY	U150D-104S-MCNY-WFB	U150D-104R-MCNY	10	4x2	15000	13	8-1/2	15-1/4
U150D-124S-MCNY	U150D-124S-MCNY-WFB	U150D-124R-MCNY	12	4x2	15000	15-1/2	10	17



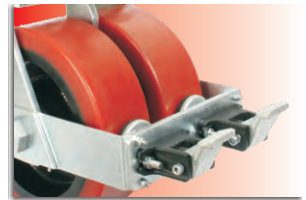


DABE100

SERIES



Swivel Head Section



Wheel Face Brake



Directional Lock

25,000 Lbs. Load Capacity Forged Precision Bearing Casters

Extra Heavy Fabricated Steel Top Plate and Fork Base

Combination of Heavy duty opposed Spherical Roller Thrust Bearings in the Swivel Head allows this caster to swivel easily even under the most punishing conditions.

Totally Sealed Swivel Head with grease nipple

1-1/2" Wheel Axle

Finish : Black Polymer Color coated

Options : 4 way directional Lock










Wheel Face Break

DABE100' SERIES CASTERS WITH 'SAS' SERIES HIGH LOAD POLYURETHANE WHEELS



- High Load Capacity Liquid Cast Premium Polyurethane Wheels 93 ± 3 Shore A
- Polyurethane firmly bonded to precision machined Cast Iron Core
- Low rolling resistance; Smooth and Noiseless running.
- Non-Marking and floor protective.
- High Abrasion, Cut and Tear resistant
- 100% tested and guaranteed against Bond Failures.
- Bearing Options:- Precision Ball Bearings; Tapered Roller Bearings
Roller Bearings
- Temperature Range: -40° F to +180° F

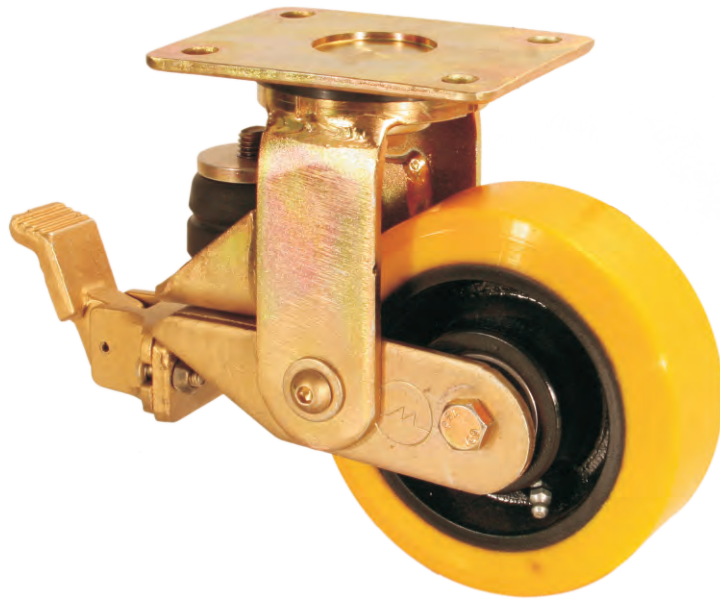


Part No. Swivel Castor	Part No. Rigid Castor	Wheel Dia x Tread Width (mm)	Overall Height (mm)	Swivel Radius (mm)	Top Plate (mm)	Bolt Hole Centers (mm)	Attaching Bolt Size (mm)	Load Cap. (kgs).
								
DABE100-165S-SAS	DABE100-163R-SAS	450 x 125 x 2	570	350	365 Dia	4 Holes At 300 p.c.d.	24	11500

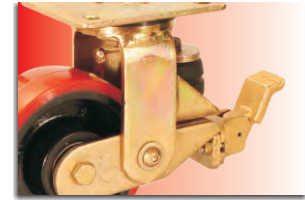


GGSU-SPR

SERIES



Swivel Head Section



Wheel Face Brake



Directional Lock

1,200 Lbs. Load Capacity

Forged Double Ball Hardened Raceway Casters

Single Piece Drop Forged AISI 1045 Steel Top Plate with Integrally Forged Kingpin

Sealed Double Ball Raceways precision CNC Machined Raceways

Induction Hardened Raceways ensure longevity of the castors

Strong Elastomeric Spring Elements Designed for specific load ranges ensure Uniform Cushion Effect through the load range

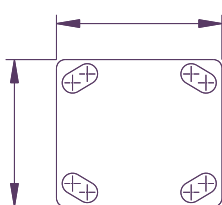
Specific Elastomeric Spring Elements available to suit different load ranges.

1/4" Thick Legs Robotically Welded Inside and Outside

1/2" Wheel Axle

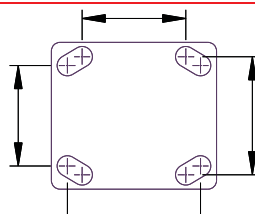
4 Position Directional Lock Slots Finish : Bright Zinc Plated

Top Plate



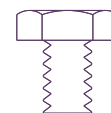
4"x4-1/2"

Bolt Hole Centers



2-5/8" x 3-5/8"
Slotted to
3" x 3"

Attaching Bolt Size

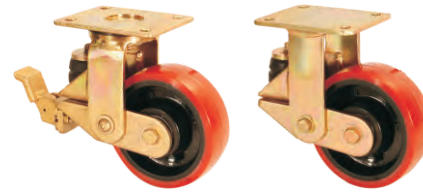


3/8"



'GGSU-SPR' SERIES CASTERS WITH 'SAS' SERIES HIGH LOAD CAPACITY POLYURETHANE WHEELS

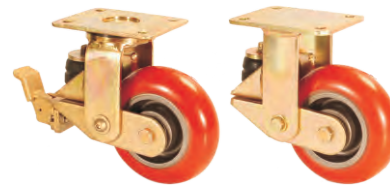
- High Load Capacity Liquid Cast Premium Polyurethane Wheels 93 + 3 Shore A
- Polyurethane firmly bonded to precision machined Cast Iron Core
- Low rolling resistance, Smooth and Noiseless running.
- Non-Marking and floor protective.
- High Abrasion, Cut and Tear resistant
- 100% tested and guaranteed against Bond Failures.
- Bearing Options: Precision Ball Bearings; Tapered Roller Bearings
Roller Bearings
- Temperature Range: -40°F to + 180°F



Part No. Swivel Caster	Part No. Swivel with Wheel Brake	Part No. Rigid Caster	Wheel Dia (inch)	Tread Width (inch)	Load Capacity (Lbs)	Overall Height Unloaded (inch)	Overall Height Fully Loaded (inch)	Swivel Radius (inch)	Swivel Radius with Wheel Brake (inch)
GGSU-SPR-42S-SAS	GGSU-SPR-42S-SAS-WFB	GGSU-SPR-42R-SAS	4	2	900	6-1/2	5-3/4	4-1/2	4-1/2
GGSU-SPR-52S-SAS	GGSU-SPR-52S-SAS-WFB	GGSU-SPR-52R-SAS	5	2	1200	7	6-1/4	5-5/8	5-5/8
GGSU-SPR-62S-SAS	GGSU-SPR-62S-SAS-WFB	GGSU-SPR-62R-SAS	6	2	1200	8	7-1/4	6-1/2	6-1/2
GGSU-SPR-82S-SAS	GGSU-SPR-82S-SAS-WFB	GGSU-SPR-82R-SAS	8	2	1200	10-1/8	9-1/2	7-1/4	7-1/4

'GGSU-SPR' SERIES CASTERS WITH 'ME' SERIES ERGONOMIC WHEELS

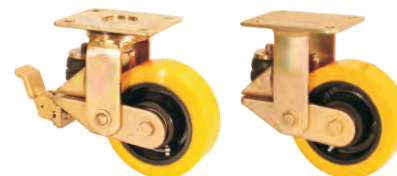
- Ergonomic Premium Polyurethane Wheels for low Push-Pull Efforts
- Polyurethane 93 ± 3 Shore A mechanically and chemically bonded to precision machined cores.
- Non-Marking and floor protective.
- 100% Tested and Guaranteed against bond failures
- Tread Options : Softer 80A – Yellow Tread (Specify ME-Z) and Harder 73D –Blue Tread (Specify ME-F)
- Bearing Options:- Precision Ball Bearings; Tapered Roller Bearings
Roller Bearings;
- Temperature Range:- -40° F to + 180° F



Part No. Swivel Caster	Part No. Swivel with Wheel Brake	Part No. Rigid Caster	Wheel Dia (inch)	Tread Width (inch)	Load Capacity (Lbs)	Overall Height Unloaded (inch)	Overall Height Fully Loaded (inch)	Swivel Radius (inch)	Swivel Radius with Wheel Brake (inch)
GGSU-SPR-42S-ME	GGSU-SPR-42S-ME-WFB	GGSU-SPR-42R-ME	4	2	775	6-1/2	5-3/4	4-1/2	4-1/2
GGSU-SPR-52S-ME	GGSU-SPR-52S-ME-WFB	GGSU-SPR-52R-ME	5	2	1000	7	6-1/4	5-5/8	5-5/8
GGSU-SPR-62S-ME	GGSU-SPR-62S-ME-WFB	GGSU-SPR-62R-ME	6	2	1200	8	7-1/4	6-1/2	6-1/2
GGSU-SPR-82S-ME	GGSU-SPR-82S-ME-WFB	GGSU-SPR-82R-ME	8	2	1200	10-1/8	9-1/2	7-1/4	7-1/4

'GGSU-SPR' SERIES CASTERS WITH 'SZS' SERIES THICK TREADED ELASTIC URETHANE WHEELS

- Elastic 85±3 Shore A Liquid Cast Polyurethane firmly bonded to Cast Iron Core
- Reduced noise due to cushioning of loads,
Lively' Polyurethane allows wheels to 'Flex and Roll' over debris
- Excellent for power towing applications
- Non-Marking and floor protective.
- 100% Tested and Guaranteed against bond failures
- Bearing Options:- Precision Ball Bearings; Tapered Roller Bearings
Roller Bearings
- Temperature Range:- -40° F to + 180° F

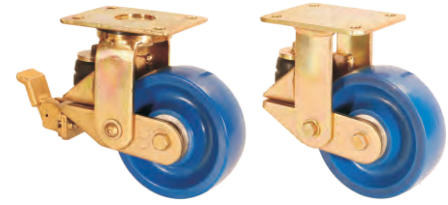


Part No. Swivel Caster	Part No. Swivel with Wheel Brake	Part No. Rigid Caster	Wheel Dia (inch)	Tread Width (inch)	Load Capacity (Lbs)	Overall Height Unloaded (inch)	Overall Height Fully Loaded (inch)	Swivel Radius (inch)	Swivel Radius with Wheel Brake (inch)
GGSU-SPR-42S-SZS	GGSU-SPR-42S-SZS-WFB	GGSU-SPR-42R-SZS	4	2	550	6-1/2	5-3/4	4-1/2	4-1/2
GGSU-SPR-52S-SZS	GGSU-SPR-52S-SZS-WFB	GGSU-SPR-52R-SZS	5	2	775	7	6-1/4	5-5/8	5-5/8
GGSU-SPR-62S-SZS	GGSU-SPR-62S-SZS-WFB	GGSU-SPR-62R-SZS	6	2	1000	8	7-1/4	6-1/2	6-1/2
GGSU-SPR-82S-SZS	GGSU-SPR-82S-SZS-WFB	GGSU-SPR-82R-SZS	8	2	1200	10-1/8	9-1/2	7-1/4	7-1/4



'GGSU-SPR' SERIES CASTERS WITH 'SFS' SERIES SOLID ELASTOMER WHEELS

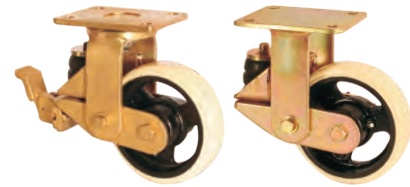
- The Ultimate Real Solid Elastomer Wheels exclusively developed by Muvtons Premium Liquid Cast 73 ± 3 Shore D Polyurethane locked mechanically to a non-corrosive metallic core that holds the precision bearings and provides structural rigidity.
- Resist compression set and provide excellent resilience for easy movement
- Non-Marking and floor protective
- Can be used for corrosive applications with suitable bearings.
- 100% Tested and Guaranteed against failures
- Bearing Options:- Precision Ball Bearings; Tapered Roller Bearings
Roller Bearings
- Temperature Range:- -40° F to +180° F



Part No. Swivel Caster	Part No. Swivel with Wheel Brake	Part No. Rigid Caster	Wheel Dia (inch)	Tread Width (inch)	Load Capacity (Lbs)	Overall Height Unloaded (inch)	Overall Height Fully Loaded (inch)	Swivel Radius (inch)	Swivel Radius with Wheel Brake (inch)
GGSU-SPR-42S-SFS	GGSU-SPR-42S-SFS-WFB	GGSU-SPR-42R-SFS	4	2	850	6-1/2	5-3/4	4-1/2	4-1/2
GGSU-SPR-52S-SFS	GGSU-SPR-52S-SFS-WFB	GGSU-SPR-52R-SFS	5	2	1100	7	6-1/4	5-5/8	5-5/8
GGSU-SPR-62S-SFS	GGSU-SPR-62S-SFS-WFB	GGSU-SPR-62R-SFS	6	2	1200	8	7-1/4	6-1/2	6-1/2
GGSU-SPR-82S-SFS	GGSU-SPR-82S-SFS-WFB	GGSU-SPR-82R-SFS	8	2	1200	10-1/8	9-1/2	7-1/4	7-1/4

'GGSU-SPR' SERIES CASTERS WITH 'SJS' SERIES POLYURETHANE WHEELS

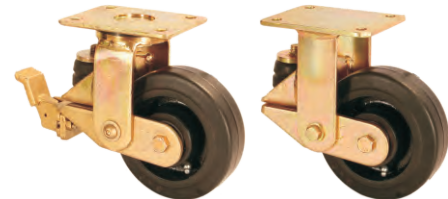
- Liquid Cast Polyurethane 93 ± 3 Shore A firmly bonded to precision machined Cast Iron Cores.
- Low rolling resistance; Smooth and noiseless running
- Non-Marking and floor protective
- Good Abrasion and cut resistance
- 100% Tested and Guaranteed against bond failures
- Ideal for medium duty applications
- Bearing Options:- Precision Ball Bearings; Tapered Roller Bearings
Roller Bearings
- Temperature Range: -40° F to +180° F



Part No. Swivel Caster	Part No. Swivel with Wheel Brake	Part No. Rigid Caster	Wheel Dia (inch)	Tread Width (inch)	Load Capacity (Lbs)	Overall Height Unloaded (inch)	Overall Height Fully Loaded (inch)	Swivel Radius (inch)	Swivel Radius with Wheel Brake (inch)
GGSU-SPR-42S-SJS	GGSU-SPR-42S-SJS-WFB	GGSU-SPR-42R-SJS	4	2	700	6-1/2	5-3/4	4-1/2	4-1/2
GGSU-SPR-52S-SJS	GGSU-SPR-52S-SJS-WFB	GGSU-SPR-52R-SJS	5	2	1000	7	6-1/4	5-5/8	5-5/8
GGSU-SPR-62S-SJS	GGSU-SPR-62S-SJS-WFB	GGSU-SPR-62R-SJS	6	2	1200	8	7-1/4	6-1/2	6-1/2
GGSU-SPR-82S-SJS	GGSU-SPR-82S-SJS-WFB	GGSU-SPR-82R-SJS	8	2	1200	10-1/8	9-1/2	7-1/4	7-1/4

'GGSU-SPR' SERIES CASTERS WITH 'SEB' SERIES HEAVY DUTY MOLDON RUBBER WHEELS

- Elastic Rubber tired wheels chemically bonded to precision machined Cast Iron Cores.
- Highly resilient 75 ± 5 Shore A rubber.
- Smooth and silent running in power towing applications.
- Bearing Options:- Precision Ball Bearings; Tapered Roller Bearings
Roller Bearings
- Temperature Range: -40° F to +180° F



Part No. Swivel Caster	Part No. Swivel with Wheel Brake	Part No. Rigid Caster	Wheel Dia (inch)	Tread Width (inch)	Load Capacity (Lbs)	Overall Height Unloaded (inch)	Overall Height Fully Loaded (inch)	Swivel Radius (inch)	Swivel Radius with Wheel Brake (inch)
GGSU-SPR-42S-SEB	GGSU-SPR-42S-SEB-WFB	GGSU-SPR-42R-SEB	4	2	450	6-1/2	5-3/4	4-1/2	4-1/2
GGSU-SPR-52S-SEB	GGSU-SPR-52S-SEB-WFB	GGSU-SPR-52R-SEB	5	2	600	7	6-1/4	5-5/8	5-5/8
GGSU-SPR-62S-SEB	GGSU-SPR-62S-SEB-WFB	GGSU-SPR-62R-SEB	6	2	775	8	7-1/4	6-1/2	6-1/2
GGSU-SPR-82S-SEB	GGSU-SPR-82S-SEB-WFB	GGSU-SPR-82R-SEB	8	2	1000	10-1/8	9-1/2	7-1/4	7-1/4

GHKU-SPR

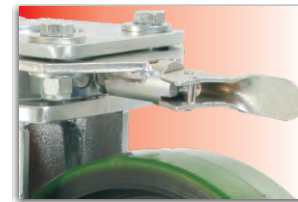
SERIES



Swivel Head Section



Wheel Face Brake



Directional Lock

2,000 Lbs. Load Capacity Kingpinless Forged Spring Loaded Casters

Single Piece Drop Forged AISI 1045 Steel Top Plate and Fork base

Precision CNC Machined Raceways and Induction Hardened ensure swivel head longevity

Totally Sealed Swivel Head with grease nipple

Strong Elastomeric Spring Elements Designed for specific load ranges ensure Uniform Cushion Effect through the load range

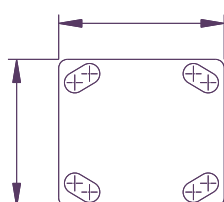
Specific Elastomeric Spring Elements available to suit different load ranges.

1/4" Thick Legs Robotically Welded Inside and Outside

1/2" Wheel Axle

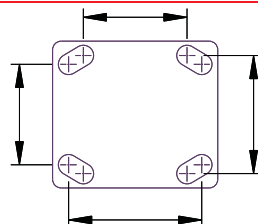
4 Position Directional Lock Slots Finish : Bright Zinc Plated

Top Plate



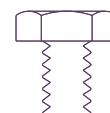
4"x4-1/2"

Bolt Hole Centers



2-5/8" x 3-5/8"
Slotted to
3" x 3"

Attaching Bolt Size



3/8"





'GHKU-SPR' SERIES CASTERS WITH 'SAS' SERIES HIGH LOAD CAPACITY POLYURETHANE WHEELS

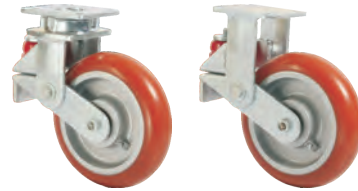
- High Load Capacity Liquid Cast Premium Polyurethane Wheels 93 ± 3 Shore A
- Polyurethane firmly bonded to precision machined Cast Iron Core
- Low rolling resistance, Smooth and Noiseless running.
- Non-Marking and floor protective.
- High Abrasion, Cut and Tear resistant
- 100% tested and guaranteed against Bond Failures.
- Bearing Options: Precision Ball Bearings; Tapered Roller Bearings
Roller Bearings
- Temperature Range: -40°F to + 180°F



Part No. Swivel Caster	Part No. Swivel with Wheel Brake	Part No. Rigid Caster	Wheel Dia (inch)	Tread Width (inch)	Load Capacity (Lbs)	Overall Height Unloaded (inch)	Overall Height Fully Loaded (inch)	Swivel Radius (inch)	Swivel Radius with Wheel Brake (inch)
GHKU-SPR-42S-SAS	GHKU-SPR-42S-SAS-WFB	GHKU-SPR-42R-SAS	4	2	900	6-1/2	5-3/4	4-1/2	4-1/2
GHKU-SPR-52S-SAS	GHKU-SPR-52S-SAS-WFB	GHKU-SPR-52R-SAS	5	2	1200	7-1/8	6-1/4	5-5/8	5-5/8
GHKU-SPR-62S-SAS	GHKU-SPR-62S-SAS-WFB	GHKU-SPR-62R-SAS	6	2	1650	8	7-1/4	6-1/2	6-1/2
GHKU-SPR-82S-SAS	GHKU-SPR-82S-SAS-WFB	GHKU-SPR-82R-SAS	8	2	2000	10-1/8	9-3/8	7-1/8	7-1/8

'GHKU-SPR' SERIES CASTERS WITH 'ME' SERIES ERGONOMIC WHEELS

- Ergonomic Premium Polyurethane Wheels for low Push-Pull Efforts
- Polyurethane 93 ± 3 Shore A mechanically and chemically bonded to precision machined cores.
- Non-Marking and floor protective.
- 100% Tested and Guaranteed against bond failures
- Tread Options : Softer 80A – Yellow Tread (Specify ME-Z) and Harder 73D –Blue Tread (Specify ME-F)
- Bearing Options:- Precision Ball Bearings; Tapered Roller Bearings
Roller Bearings;
- Temperature Range:- -40° F to + 180° F



Part No. Swivel Caster	Part No. Swivel with Wheel Brake	Part No. Rigid Caster	Wheel Dia (inch)	Tread Width (inch)	Load Capacity (Lbs)	Overall Height Unloaded (inch)	Overall Height Fully Loaded (inch)	Swivel Radius (inch)	Swivel Radius with Wheel Brake (inch)
GHKU-SPR-42S-ME	GHKU-SPR-42S-ME-WFB	GHKU-SPR-42R-ME	4	2	775	6-1/2	5-3/4	4-1/2	4-1/2
GHKU-SPR-52S-ME	GHKU-SPR-52S-ME-WFB	GHKU-SPR-52R-ME	5	2	1000	7-1/8	6-1/4	5-5/8	5-5/8
GHKU-SPR-62S-ME	GHKU-SPR-62S-ME-WFB	GHKU-SPR-62R-ME	6	2	1250	8	7-1/4	6-1/2	6-1/2
GHKU-SPR-82S-ME	GHKU-SPR-82S-ME-WFB	GHKU-SPR-82R-ME	8	2	1700	10-1/8	9-3/8	7-1/8	7-1/8

'GHKU-SPR' SERIES CASTERS WITH 'SZS' SERIES THICK TREADED ELASTIC URETHANE WHEELS

- Elastic 85±3 Shore A Liquid Cast Polyurethane firmly bonded to Cast Iron Core
- Reduced noise due to cushioning of loads,
- Lively Polyurethane allows wheels to 'Flex and Roll' over debris
- Excellent for power towing applications
- Non-Marking and floor protective.
- 100% Tested and Guaranteed against bond failures
- Bearing Options:- Precision Ball Bearings; Tapered Roller Bearings
Roller Bearings
- Temperature Range:- -40° F to + 180° F



Part No. Swivel Caster	Part No. Swivel with Wheel Brake	Part No. Rigid Caster	Wheel Dia (inch)	Tread Width (inch)	Load Capacity (Lbs)	Overall Height Unloaded (inch)	Overall Height Fully Loaded (inch)	Swivel Radius (inch)	Swivel Radius with Wheel Brake (inch)
GHKU-SPR-42S-SZS	GHKU-SPR-42S-SZS-WFB	GHKU-SPR-42R-SZS	4	2	550	6-1/2	5-3/4	4-1/2	4-1/2
GHKU-SPR-52S-SZS	GHKU-SPR-52S-SZS-WFB	GHKU-SPR-52R-SZS	5	2	775	7-1/8	6-1/4	5-5/8	5-5/8
GHKU-SPR-62S-SZS	GHKU-SPR-62S-SZS-WFB	GHKU-SPR-62R-SZS	6	2	1000	8	7-1/4	6-1/2	6-1/2
GHKU-SPR-82S-SZS	GHKU-SPR-82S-SZS-WFB	GHKU-SPR-82R-SZS	8	2	1450	10-1/8	9-3/8	7-1/8	7-1/8



'GHKU-SPR' SERIES CASTERS WITH 'SFS' SERIES SOLID ELASTOMER WHEELS

- The Ultimate Real Solid Elastomer Wheels exclusively developed by Muvtons Premium Liquid Cast 73 ± 3 Shore D Polyurethane locked mechanically to a non-corrosive metallic core that holds the precision bearings and provides structural rigidity.
- Resist compression set and provide excellent resilience for easy movement
- Non-Marking and floor protective
- Can be used for corrosive applications with suitable bearings.
- 100% Tested and Guaranteed against failures
- Bearing Options:- Precision Ball Bearings; Tapered Roller Bearings
Roller Bearings
- Temperature Range:- -40° F to + 180° F



Part No. Swivel Caster	Part No. Swivel with Wheel Brake	Part No. Rigid Caster	Wheel Dia (inch)	Tread Width (inch)	Load Capacity (Lbs)	Overall Height Unloaded (inch)	Overall Height Fully Loaded (inch)	Swivel Radius (inch)	Swivel Radius with Wheel Brake (inch)
GHKU-SPR-42S-SFS	GHKU-SPR-42S-SFS-WFB	GHKU-SPR-42R-SFS	4	2	850	6-1/2	5-3/4	4-1/2	4-1/2
GHKU-SPR-52S-SFS	GHKU-SPR-52S-SFS-WFB	GHKU-SPR-52R-SFS	5	2	1100	7-1/8	6-1/4	5-5/8	5-5/8
GHKU-SPR-62S-SFS	GHKU-SPR-62S-SFS-WFB	GHKU-SPR-62R-SFS	6	2	1500	8	7-1/4	6-1/2	6-1/2
GHKU-SPR-82S-SFS	GHKU-SPR-82S-SFS-WFB	GHKU-SPR-82R-SFS	8	2	1750	10-1/8	9-3/8	7-1/8	7-1/8

'GHKU-SPR' SERIES CASTERS WITH 'SJS' SERIES POLYURETHANE WHEELS

- Liquid Cast Polyurethane 93 ± 3 Shore A firmly bonded to precision machined Cast Iron Cores.
- Low rolling resistance; Smooth and noiseless running
- Non-Marking and floor protective
- Good Abrasion and cut resistance
- 100% Tested and Guaranteed against bond failures
- Ideal for medium duty applications
- Bearing Options:- Precision Ball Bearings; Tapered Roller Bearings
Roller Bearings
- Temperature Range: -40° F to +180° F



Part No. Swivel Caster	Part No. Swivel with Wheel Brake	Part No. Rigid Caster	Wheel Dia (inch)	Tread Width (inch)	Load Capacity (Lbs)	Overall Height Unloaded (inch)	Overall Height Fully Loaded (inch)	Swivel Radius (inch)	Swivel Radius with Wheel Brake (inch)
GHKU-SPR-42S-SJS	GHKU-SPR-42S-SJS-WFB	GHKU-SPR-42R-SJS	4	2	700	6-1/2	5-3/4	4-1/2	4-1/2
GHKU-SPR-52S-SJS	GHKU-SPR-52S-SJS-WFB	GHKU-SPR-52R-SJS	5	2	1000	7-1/8	6-1/4	5-5/8	5-5/8
GHKU-SPR-62S-SJS	GHKU-SPR-62S-SJS-WFB	GHKU-SPR-62R-SJS	6	2	1200	8	7-1/4	6-1/2	6-1/2
GHKU-SPR-82S-SJS	GHKU-SPR-82S-SJS-WFB	GHKU-SPR-82R-SJS	8	2	1500	10-1/8	9-3/8	7-1/8	7-1/8

'GHKU-SPR' SERIES CASTERS WITH 'SEB' SERIES HEAVY DUTY MOLDON RUBBER WHEELS

- Elastic Rubber tired wheels chemically bonded to precision machined Cast Iron Cores.
- Highly resilient 75 ± 5 Shore A rubber.
- Smooth and silent running in power towing applications.
- Bearing Options:- Precision Ball Bearings; Tapered Roller Bearings
Roller Bearings
- Temperature Range: -40° F to +180° F



Part No. Swivel Caster	Part No. Swivel with Wheel Brake	Part No. Rigid Caster	Wheel Dia (inch)	Tread Width (inch)	Load Capacity (Lbs)	Overall Height Unloaded (inch)	Overall Height Fully Loaded (inch)	Swivel Radius (inch)	Swivel Radius with Wheel Brake (inch)
GHKU-SPR-42S-SEB	GHKU-SPR-42S-SEB-WFB	GHKU-SPR-42R-SEB	4	2	460	6-1/2	5-3/4	4-1/2	4-1/2
GHKU-SPR-52S-SEB	GHKU-SPR-52S-SEB-WFB	GHKU-SPR-52R-SEB	5	2	600	7-1/8	6-1/4	5-5/8	5-5/8
GHKU-SPR-62S-SEB	GHKU-SPR-62S-SEB-WFB	GHKU-SPR-62R-SEB	6	2	775	8	7-1/4	6-1/2	6-1/2
GHKU-SPR-82S-SEB	GHKU-SPR-82S-SEB-WFB	GHKU-SPR-82R-SEB	8	2	1000	10-1/8	9-3/8	7-1/8	7-1/8