



## **Kingpin Type Casters**

**Acorn Industrial Products Co**  
520 Hertzog Boulevard  
King of Prussia, PA 19406  
Phone 800-523-5474  
Fax 800-782-6780  
E-Mail [acorn@acornindprod.com](mailto:acorn@acornindprod.com)

**INDUSTRIALS**



# Integral Kingpin Type Forged Casters



**GGSU Series**  
1,200 Lbs. Load Capacity

**Page**  
51



**U20 Series**  
2,000 Lbs. Load Capacity

55



**U25 Series**  
2,500 Lbs. Load Capacity

60



**U30 Series**  
3,500 Lbs. Load Capacity

65



**U100 Series**  
10,000 Lbs. Load Capacity

70



**U150 Series**  
15,000 Lbs. Load Capacity

74



**U150D Series**  
15,000 Lbs. Load Capacity Dual Wheel

78

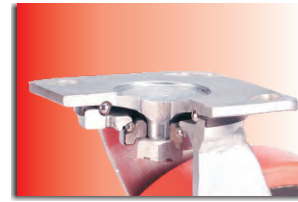


**DABE100 Series**  
25,000 Lbs. Load Capacity Dual Wheel

82

# GGSU

## SERIES



Swivel Head Section



Total Lock System



Wheel Face Brake



Directional Lock

### 1,200 Lbs. Load Capacity Forged Double Ball Hardened Raceway Casters

Single Piece Drop Forged AISI 1045 Steel Top Plate with Integrally Forged Kingpin

Forged Lower Raceway

Sealed Double Ball Raceways

Precision CNC Machined Raceways

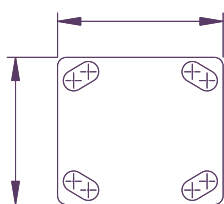
Induction Hardened Raceways

1/4" Thick Legs Robotically Welded Inside and Outside

1/2" Wheel Axle

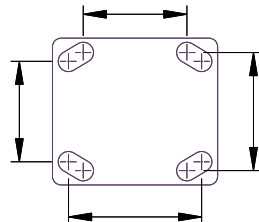
4 Position Directional Lock Slots      Finish : Bright Zinc Plated

#### Top Plate



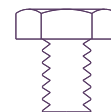
4"x4-1/2"

#### Bolt Hole Centers



2-5/8" x 3-5/8"  
Slotted to  
3" x 3"

#### Attaching Bolt Size



3/8"



## 'GGSU' SERIES CASTERS WITH 'SAS' SERIES HIGH LOAD CAPACITY POLYURETHANE WHEELS

- High Load Capacity Liquid Cast Premium Polyurethane Wheels 93 + 3 Shore A
- Polyurethane firmly bonded to precision machined Cast Iron Core
- Low rolling resistance, Smooth and Noiseless running.
- Non-Marking and floor protective.
- High Abrasion, Cut and Tear resistant
- 100% tested and guaranteed against Bond Failures.
- Bearing Options: Precision Ball Bearings; Tapered Roller Bearings  
Roller Bearings
- Temperature Range: -40°F to + 180°F



Part No. Swivel Caster	Part No. Swivel with Total Lock	Part No. Rigid Caster	Wheel Dia (inch)	Tread Width (inch)	Load Capacity (Lbs)	Overall Height (inch)	Swivel Radius (inch)	Swivel Radius with Total Lock (inch)	Swivel Radius with Wheel Brake (inch)
GGSU-42S-SAS	GGSU-42S-SAS-TL	GGSU-42R-SAS	4	2	900	5-5/8	3-3/8	4	8-3/4
GGSU-52S-SAS	GGSU-52S-SAS-TL	GGSU-52R-SAS	5	2	1200	6-1/2	4	4	9-1/4
GGSU-62S-SAS	GGSU-62S-SAS-TL	GGSU-62R-SAS	6	2	1200	7-1/2	4-3/4	6	10-1/4
GGSU-82S-SAS	GGSU-82S-SAS-TL	GGSU-82R-SAS	8	2	1200	9-1/2	6-1/4	6-1/4	11- 3/4

## 'GGSU' SERIES CASTERS WITH 'ME' SERIES ERGONOMIC WHEELS

- Ergonomic Premium Polyurethane Wheels for low Push-Pull Efforts
- Polyurethane 93 ± 3 Shore A mechanically and chemically bonded to precision machined cores.
- Non-Marking and floor protective.
- 100% Tested and Guaranteed against bond failures
- Tread Options : Softer 80A – Yellow Tread (Specify ME-Z) and Harder 73D –Blue Tread (Specify ME-F)
- Bearing Options:- Precision Ball Bearings; Tapered Roller Bearings  
Roller Bearings;
- Temperature Range:- -40° F to + 180° F



Part No. Swivel Caster	Part No. Swivel with Total Lock	Part No. Rigid Caster	Wheel Dia (inch)	Tread Width (inch)	Load Capacity (Lbs)	Overall Height (inch)	Swivel Radius (inch)	Swivel Radius with Total Lock (inch)	Swivel Radius with Wheel Brake (inch)
GGSU-42S-ME	GGSU-42S-ME-TL	GGSU-42R-ME	4	2	775	5-5/8	3-3/8	4	8-3/4
GGSU-52S-ME	GGSU-52S-ME-TL	GGSU-52R-ME	5	2	1000	6-1/2	4	4	9-1/4
GGSU-62S-ME	GGSU-62S-ME-TL	GGSU-62R-ME	6	2	1200	7-1/2	4-3/4	6	10-1/4
GGSU-82S-ME	GGSU-82S-ME-TL	GGSU-82R-ME	8	2	1200	9-1/2	6-1/4	6-1/4	11- 3/4

## 'GGSU' SERIES SOFTER CASTERS WITH 'SZS' SERIES THICK TREADED ELASTIC URETHANE WHEELS

- Elastic 85±3 Shore A Liquid Cast Polyurethane firmly bonded to Cast Iron Core
- Reduced noise due to cushioning of loads,
- Lively' Polyurethane allows wheels to 'Flex and Roll' over debris
- Excellent for power towing applications
- Non-Marking and floor protective.
- 100% Tested and Guaranteed against bond failures
- Bearing Options:- Precision Ball Bearings; Tapered Roller Bearings  
Roller Bearings
- Temperature Range:- -40° F to + 180° F



Part No. Swivel Caster	Part No. Swivel with Total Lock	Part No. Rigid Caster	Wheel Dia (inch)	Tread Width (inch)	Load Capacity (Lbs)	Overall Height (inch)	Swivel Radius (inch)	Swivel Radius with Total Lock (inch)	Swivel Radius with Wheel Brake (inch)
GGSU-42S-SZS	GGSU-42S-SZS-TL	GGSU-42R-SZS	4	2	550	5-5/8	3-3/8	4	8-3/4
GGSU-52S-SZS	GGSU-52S-SZS-TL	GGSU-52R-SZS	5	2	775	6-1/2	4	4	9-1/4
GGSU-62S-SZS	GGSU-62S-SZS-TL	GGSU-62R-SZS	6	2	1000	7-1/2	4-3/4	6	10-1/4
GGSU-82S-SZS	GGSU-82S-SZS-TL	GGSU-82R-SZS	8	2	1200	9-1/2	6-1/4	6-1/4	11- 3/4



## 'GGSU' SERIES CASTERS WITH 'SFS' SERIES SOLID ELASTOMER WHEELS

- The Ultimate Real Solid Elastomer Wheels exclusively developed by Muvtons Premium Liquid Cast 73 ± 3 Shore D Polyurethane locked mechanically to a non-corrosive metallic core that holds the precision bearings and provides structural rigidity.
- Resist compression set and provide excellent resilience for easy movement
- Non-Marking and floor protective
- Can be used for corrosive applications with suitable bearings.
- 100% Tested and Guaranteed against failures
- Bearing Options:- Precision Ball Bearings; Tapered Roller Bearings
- Temperature Range:- -40° F to + 180° F



Part No. Swivel Caster	Part No. Swivel with Total Lock	Part No. Rigid Caster	Wheel Dia (inch)	Tread Width (inch)	Load Capacity (Lbs)	Overall Height (inch)	Swivel Radius (inch)	Swivel Radius with Total Lock (inch)	Swivel Radius with Wheel Brake (inch)
GGSU-42S-SFS	GGSU-42S-SFS-TL	GGSU-42R-SFS	4	2	850	5-5/8	3-3/8	4	8-3/4
GGSU-52S-SFS	GGSU-52S-SFS-TL	GGSU-52R-SFS	5	2	1100	6-1/2	4	4	9-1/4
GGSU-62S-SFS	GGSU-62S-SFS-TL	GGSU-62R-SFS	6	2	1200	7-1/2	4-3/4	6	10-1/4
GGSU-82S-SFS	GGSU-82S-SFS-TL	GGSU-82R-SFS	8	2	1200	9-1/2	6-1/4	6-1/4	11- 3/4

## 'GGSU' SERIES CASTERS WITH 'SJS' SERIES POLYURETHANE WHEELS

- Liquid Cast Polyurethane 93 ± 3 Shore A firmly bonded to precision machined Cast Iron Cores.
- Low rolling resistance; Smooth and noiseless running
- Non-Marking and floor protective
- Good Abrasion and cut resistance
- 100% Tested and Guaranteed against bond failures
- Ideal for medium duty applications
- Bearing Options:- Precision Ball Bearings; Tapered Roller Bearings
- Temperature Range: -40° F to +180° F



Part No. Swivel Caster	Part No. Swivel with Total Lock	Part No. Rigid Caster	Wheel Dia (inch)	Tread Width (inch)	Load Capacity (Lbs)	Overall Height (inch)	Swivel Radius (inch)	Swivel Radius with Total Lock (inch)	Swivel Radius with Wheel Brake (inch)
GGSU-42S-SJS	GGSU-42S-SJS-TL	GGSU-42R-SJS	4	2	700	5-5/8	3-3/8	4	8-3/4
GGSU-52S-SJS	GGSU-52S-SJS-TL	GGSU-52R-SJS	5	2	1000	6-1/2	4	4	9-1/4
GGSU-62S-SJS	GGSU-62S-SJS-TL	GGSU-62R-SJS	6	2	1200	7-1/2	4-3/4	6	10-1/4
GGSU-82S-SJS	GGSU-82S-SJS-TL	GGSU-82R-SJS	8	2	1200	9-1/2	6-1/4	6-1/4	11- 3/4

## 'GGSU' SERIES CASTERS WITH 'SEB' SERIES HEAVY DUTY MOLDON RUBBER WHEELS

- Elastic Rubber tired wheels chemically bonded to precision machined Cast Iron Cores.
- Highly resilient 75 ± 5 Shore A rubber.
- Smooth and silent running in power towing applications.
- Bearing Options:- Precision Ball Bearings; Tapered Roller Bearings
- Temperature Range: -40° F to +180° F



Part No. Swivel Caster	Part No. Swivel with Total Lock	Part No. Rigid Caster	Wheel Dia (inch)	Tread Width (inch)	Load Capacity (Lbs)	Overall Height (inch)	Swivel Radius (inch)	Swivel Radius with Total Lock (inch)	Swivel Radius with Wheel Brake (inch)
GGSU-42S-SEB	GGSU-42S-SEB-TL	GGSU-42R-SEB	4	2	450	5-5/8	3-3/8	4	8-3/4
GGSU-52S-SEB	GGSU-52S-SEB-TL	GGSU-52R-SEB	5	2	600	6-1/2	4	4	9-1/4
GGSU-62S-SEB	GGSU-62S-SEB-TL	GGSU-62R-SEB	6	2	775	7-1/2	4-3/4	6	10-1/4
GGSU-82S-SEB	GGSU-82S-SEB-TL	GGSU-82R-SEB	8	2	1000	9-1/2	6-1/4	6-1/4	11- 3/4



## 'GGSU' SERIES CASTERS WITH 'MCI' SERIES CAST IRON WHEELS

- Special Grey cast iron wheels - solid core construction
- Fully machined tread faces – crown treaded for easy maneuverability.
- High abrasion and oil resistant
- Can be used upto 800° F with appropriate wheel bearings.
- Bearing Options:- Precision Ball Bearings; Tapered Roller Bearings  
Roller Bearings
- Temperature Range: upto 800° F with appropriate bearings



Part No. Swivel Caster	Part No. Swivel with Total Lock	Part No. Rigid Caster	Wheel Dia (inch)	Tread Width (inch)	Load Capacity (Lbs)	Overall Height (inch)	Swivel Radius (inch)	Swivel Radius with Total Lock (inch)	Swivel Radius with Wheel Brake (inch)
GGSU-42S-MCI	GGSU-42S-MCI-TL	GGSU-42R-MCI	4	2	1000	5-5/8	3-3/8	4	8-3/4
GGSU-52S-MCI	GGSU-52S-MCI-TL	GGSU-52R-MCI	5	2	1200	6-1/2	4	4	9-1/4
GGSU-62S-MCI	GGSU-62S-MCI-TL	GGSU-62R-MCI	6	2	1200	7-1/2	4-3/4	6	10-1/4
GGSU-82S-MCI	GGSU-82S-MCI-TL	GGSU-82R-MCI	8	2	1200	9-1/2	6-1/4	6-1/4	11- 3/4

## 'GGSU' SERIES CASTERS WITH 'MDW' SERIES DUCTILE STEEL WHEELS

- Special Ductile Cast Steel wheels with fully machined tread face
- Crown Tread Face makes maneuverability easy
- Higher Load Capacities compared to Cast Iron Wheels
- Suitable for extra heavy loads towed in punishing conditions.
- High abrasion and oil resistance
- Bearing Options:- Precision Ball Bearings; Tapered Roller Bearings  
Roller Bearings
- Temperature Range: upto 800° F with appropriate bearings



Part No. Swivel Caster	Part No. Swivel with Total Lock	Part No. Rigid Caster	Wheel Dia (inch)	Tread Width (inch)	Load Capacity (Lbs)	Overall Height (inch)	Swivel Radius (inch)	Swivel Radius with Total Lock (inch)	Swivel Radius with Wheel Brake (inch)
GGSU-42S-MDW	GGSU-42S-MDW-TL	GGSU-42R-MDW	4	2	1200	5-5/8	3-3/8	4	8-3/4
GGSU-52S-MDW	GGSU-52S-MDW-TL	GGSU-52R-MDW	5	2	1200	6-1/2	4	4	9-1/4
GGSU-62S-MDW	GGSU-62S-MDW-TL	GGSU-62R-MDW	6	2	1200	7-1/2	4-3/4	6	10-1/4
GGSU-82S-MDW	GGSU-82S-MDW-TL	GGSU-82R-MDW	8	2	1200	9-1/2	6-1/4	6-1/4	11- 3/4

## 'GGSU' SERIES CASTERS WITH MOR SERIES MOLDON RUBBER WHEELS

- Black rubber wheels firmly bonded to precision machined Cast Iron Cores
- Smooth and silent running
- Good quality 75 Shore A rubber with minimum Tensile Strength of 1000 psi
- Suitable for medium duty hand truck applications.
- Bearing Options:- Roller Bearings, Precision Ball Bearings;
- Temperature Range: -40° F to + 180° F



Part No. Swivel Caster	Part No. Swivel with Total Lock	Part No. Rigid Caster	Wheel Dia (inch)	Tread Width (inch)	Load Capacity (Lbs)	Overall Height (inch)	Swivel Radius (inch)	Swivel Radius with Total Lock (inch)	Swivel Radius with Wheel Brake (inch)
GGSU-42S-MOR	GGSU-42S-MOR-TL	GGSU-42R-MOR	4	2	350	5-5/8	3-3/8	4	8-3/4
GGSU-52S-MOR	GGSU-52S-MOR-TL	GGSU-52R-MOR	5	2	400	6-1/2	4	4	9-1/4
GGSU-62S-MOR	GGSU-62S-MOR-TL	GGSU-62R-MOR	6	2	450	7-1/2	4-3/4	6	10-1/4
GGSU-82S-MOR	GGSU-82S-MOR-TL	GGSU-82R-MOR	8	2	525	9-1/2	6-1/4	6-1/4	11- 3/4



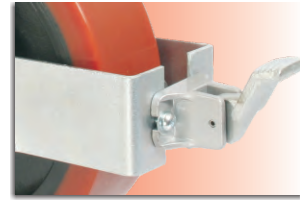
# U-20 SERIES



Swivel Head Section



Total Lock System



Wheel Face Brake



Directional Lock

## 2,000 Lbs. Load Capacity Forged Kingpin Type Casters

Single piece Drop Forged AISI 1045 Steel Top Plate with an Integrally Forged Kingpin

Forged AISI 1045 Steel Fork Base

Main Swivel Raceway : Precision CNC Machined - 3-1/4" dia with 7/16" ball bearings

Secondary Load Bearing: 3/4" Bore Tapered Roller Bearing for superior swiveling and perfect swivel head alignment

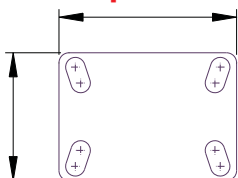
1/4" thick x 2-1/4" wide fork legs Cylindrically Formed and Robotically Welded Inside and Outside to 2-1/2" fork spacing

1/2" Wheel axle

4 Position Directional Lock Slots

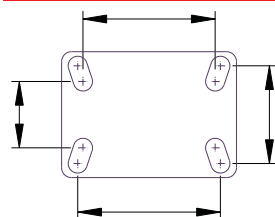
Finish: Bright Zinc Plated

### Top Plate



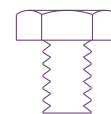
4-1/2" x 6-1/4"

### Bolt Hole Centers



2-7/16 x 4-15/16  
Slotted To  
3-3/8" x 5-1/4"

### Attaching Bolt Size



1/2"



## 'U20' SERIES CASTERS WITH 'SAS' SERIES HIGH LOAD CAPACITY POLYURETHANE WHEELS

- High Load Capacity Liquid Cast Premium Polyurethane Wheels 93 ± 3 Shore A
- Polyurethane firmly bonded to precision machined Cast Iron Core
- Low rolling resistance, Smooth and Noiseless running.
- Non-Marking and floor protective.
- High Abrasion, Cut and Tear resistant
- 100% tested and guaranteed against Bond Failures.
- Bearing Options: Precision Ball Bearings; Tapered Roller Bearings  
Roller Bearings; Plain Bore or Keyway Bore
- Temperature Range: -40°F to + 180°F



Part No. Swivel Caster	Part No. Swivel with Total Lock	Part No. Rigid Caster	Wheel Dia  (inch)	Tread Width  (inch)	Load Capacity  (Lbs)	Overall Height  (inch)	Swivel Radius  (inch)	Swivel Radius with Total Lock  (inch)	Swivel Radius with Wheel Brake  (inch)
U20-42S-SAS	U20-42S-SAS-TL	U20-42R-SAS	4	2	900	5-5/8	3-3/4	4	8-1/2
U20-52S-SAS	U20-52S-SAS-TL	U20-52R-SAS	5	2	1200	6-1/2	4-5/8	4-5/8	9-5/8
U20-62S-SAS	U20-62S-SAS-TL	U20-62R-SAS	6	2	1650	7-1/2	5-1/4	6	10-1/4
U20-82S-SAS	U20-82S-SAS-TL	U20-82R-SAS	8	2	2000	10-1/8	6-1/2	6-1/2	11-1/2

## 'U20' SERIES CASTERS WITH 'ME' SERIES ERGONOMIC WHEELS

- Ergonomic Premium Polyurethane Wheels for low Push-Pull Efforts
- Polyurethane 93 ± 3 Shore A mechanically and chemically bonded to precision machined cores.
- Non-Marking and floor protective.
- 100% Tested and Guaranteed against bond failures
- Tread Options : Softer 80A – Yellow Tread (Specify ME-Z) and Harder 73D –Blue Tread (Specify ME-F)
- Bearing Options:- Precision Ball Bearings; Tapered Roller Bearings  
Roller Bearings;
- Temperature Range:- -40° F to + 180° F



Part No. Swivel Caster	Part No. Swivel with Total Lock	Part No. Rigid Caster	Wheel Dia  (inch)	Tread Width  (inch)	Load Capacity  (Lbs)	Overall Height  (inch)	Swivel Radius  (inch)	Swivel Radius with Total Lock  (inch)	Swivel Radius with Wheel Brake  (inch)
U20-42S-ME	U20-42S-ME-TL	U20-42R-ME	4	2	775	5-5/8	3-3/4	4	8-1/2
U20-52S-ME	U20-52S-ME-TL	U20-52R-ME	5	2	1000	6-1/2	4-5/8	4-5/8	9-5/8
U20-62S-ME	U20-62S-ME-TL	U20-62R-ME	6	2	1250	7-1/2	5-1/4	6	10-1/4
U20-82S-ME	U20-82S-ME-TL	U20-82R-ME	8	2	1700	10-1/8	6-1/2	6-1/2	11-1/2

## 'U20' SERIES CASTERS WITH 'SZS' SERIES THICK TREADED ELASTIC URETHANE WHEELS

- Elastic 85±3 Shore A Liquid Cast Polyurethane firmly bonded to Cast Iron Core
- Reduced noise due to cushioning of loads,
- Lively Polyurethane allows wheels to 'Flex and Roll' over debris
- Excellent for power towing applications
- Non-Marking and floor protective.
- 100% Tested and Guaranteed against bond failures
- Bearing Options:- Precision Ball Bearings; Tapered Roller Bearings  
Roller Bearings;
- Temperature Range:- -40° F to + 180° F



Part No. Swivel Caster	Part No. Swivel with Total Lock	Part No. Rigid Caster	Wheel Dia  (inch)	Tread Width  (inch)	Load Capacity  (Lbs)	Overall Height  (inch)	Swivel Radius  (inch)	Swivel Radius with Total Lock  (inch)	Swivel Radius with Wheel Brake  (inch)
U20-42S-SZS	U20-42S-SZS-TL	U20-42R-SZS	4	2	550	5-5/8	3-3/4	4	8-1/2
U20-52S-SZS	U20-52S-SZS-TL	U20-52R-SZS	5	2	775	6-1/2	4-5/8	4-5/8	9-5/8
U20-62S-SZS	U20-62S-SZS-TL	U20-62R-SZS	6	2	1000	7-1/2	5-1/4	6	10-1/4
U20-82S-SZS	U20-82S-SZS-TL	U20-82R-SZS	8	2	1450	10-1/8	6-1/2	6-1/2	11-1/2



## 'U20' SERIES CASTERS WITH 'SFS' SERIES SOLID ELASTOMER WHEELS

- The Ultimate Real Solid Elastomer Wheels exclusively developed by Muvtons Premium Liquid Cast 73 ± 3 Shore D Polyurethane locked mechanically to a non-corrosive metallic core that holds the precision bearings and provides structural rigidity.
- Resist compression set and provide excellent resilience for easy movement
- Non-Marking and floor protective
- Can be used for corrosive applications with suitable bearings.
- 100% Tested and Guaranteed against failures
- Bearing Options:- Precision Ball Bearings; Tapered Roller Bearings  
Roller Bearings
- Temperature Range:- -40° F to + 180° F



Part No. Swivel Caster	Part No. Swivel with Total Lock	Part No. Rigid Caster	Wheel Dia (inch)	Tread Width (inch)	Load Capacity (Lbs)	Overall Height (inch)	Swivel Radius (inch)	Swivel Radius with Total Lock (inch)	Swivel Radius with Wheel Brake (inch)
U20-42S-SFS	U20-42S-SFS-TL	U20-42R-SFS	4	2	850	5-5/8	3-3/4	4	8-1/2
U20-52S-SFS	U20-52S-SFS-TL	U20-52R-SFS	5	2	1100	6-1/2	4-5/8	4-5/8	9-5/8
U20-62S-SFS	U20-62S-SFS-TL	U20-62R-SFS	6	2	1500	7-1/2	5-1/4	6	10-1/4
U20-82S-SFS	U20-82S-SFS-TL	U20-82R-SFS	8	2	1750	10-1/8	6-1/2	6-1/2	11-1/2

## 'U20' SERIES CASTERS WITH 'SJS' SERIES POLYURETHANE WHEELS

- Liquid Cast Polyurethane 93 ± 3 Shore A firmly bonded to precision machined Cast Iron Cores.
- Low rolling resistance; Smooth and noiseless running
- Non-Marking and floor protective
- Good Abrasion and cut resistance
- 100% Tested and Guaranteed against bond failures
- Ideal for medium duty applications
- Bearing Options:- Precision Ball Bearings; Tapered Roller Bearings  
Roller Bearings
- Temperature Range:- -40° F to +180° F



Part No. Swivel Caster	Part No. Swivel with Total Lock	Part No. Rigid Caster	Wheel Dia (inch)	Tread Width (inch)	Load Capacity (Lbs)	Overall Height (inch)	Swivel Radius (inch)	Swivel Radius with Total Lock (inch)	Swivel Radius with Wheel Brake (inch)
U20-42S-SJS	U20-42S-SJS-TL	U20-42R-SJS	4	2	700	5-5/8	3-3/4	4	8-1/2
U20-52S-SJS	U20-52S-SJS-TL	U20-52R-SJS	5	2	1000	6-1/2	4-5/8	4-5/8	9-5/8
U20-62S-SJS	U20-62S-SJS-TL	U20-62R-SJS	6	2	1200	7-1/2	5-1/4	6	10-1/4
U20-82S-SJS	U20-82S-SJS-TL	U20-82R-SJS	8	2	1500	10-1/8	6-1/2	6-1/2	11-1/2

## 'U20' SERIES CASTERS WITH 'SEB' SERIES HEAVY DUTY MOLDON RUBBER WHEELS

- Elastic Rubber tired wheels chemically bonded to precision machined Cast Iron Cores.
- Highly resilient 75 ± 5 Shore A rubber.
- Smooth and silent running in power towing applications.
- Bearing Options:- Precision Ball Bearings; Tapered Roller Bearings  
Roller Bearings
- Temperature Range:- -40° F to +180° F



Part No. Swivel Caster	Part No. Swivel with Total Lock	Part No. Rigid Caster	Wheel Dia (inch)	Tread Width (inch)	Load Capacity (Lbs)	Overall Height (inch)	Swivel Radius (inch)	Swivel Radius with Total Lock (inch)	Swivel Radius with Wheel Brake (inch)
U20-42S-SEB	U20-42S-SEB-TL	U20-42R-SEB	4	2	460	5-5/8	3-3/4	4	8-1/2
U20-52S-SEB	U20-52S-SEB-TL	U20-52R-SEB	5	2	600	6-1/2	4-5/8	4-5/8	9-5/8
U20-62S-SEB	U20-62S-SEB-TL	U20-62R-SEB	6	2	775	7-1/2	5-1/4	6	10-1/4
U20-82S-SEB	U20-82S-SEB-TL	U20-82R-SEB	8	2	1000	10-1/8	6-1/2	6-1/2	11-1/2



## 'U20' SERIES CASTERS WITH MOR SERIES MOLDON RUBBER WHEELS

- Black rubber wheels firmly bonded to precision machined Cast Iron Cores
- Smooth and silent running
- Good quality 75 Shore A rubber with minimum Tensile Strength of 1000 psi
- Suitable for medium duty hand truck applications.
- Bearing Options:- Roller Bearings, Precision Ball Bearings;
- Temperature Range: -40° F to + 180° F



Part No. Swivel Caster	Part No. Swivel with Total Lock	Part No. Rigid Caster	Wheel Dia (inch)	Tread Width (inch)	Load Capacity (Lbs)	Overall Height (inch)	Swivel Radius (inch)	Swivel Radius with Total Lock (inch)	Swivel Radius with Wheel Brake (inch)
U20-42S-MOR	U20-42S-MOR-TL	U20-42R-MOR	4	2	350	5-5/8	3-3/4	4	8-1/2
U20-52S-MOR	U20-52S-MOR-TL	U20-52R-MOR	5	2	400	6-1/2	4-5/8	4-5/8	9-5/8
U20-62S-MOR	U20-62S-MOR-TL	U20-62R-MOR	6	2	450	7-1/2	5-1/4	6	10-1/4
U20-82S-MOR	U20-82S-MOR-TL	U20-82R-MOR	8	2	525	10-1/8	6-1/2	6-1/2	11-1/2

## 'U20' SERIES CASTERS WITH 'MCI' SERIES CAST IRON WHEELS

- Special Grey cast iron wheels - solid core construction
- Fully machined tread faces – crown treaded for easy maneuverability.
- High abrasion and oil resistant
- Can be used upto 800° F with appropriate wheel bearings.
- Bearing Options:- Precision Ball Bearings; Tapered Roller Bearings  
Roller Bearings
- Temperature Range: upto 800° F with appropriate bearings



Part No. Swivel Caster	Part No. Swivel with Total Lock	Part No. Rigid Caster	Wheel Dia (inch)	Tread Width (inch)	Load Capacity (Lbs)	Overall Height (inch)	Swivel Radius (inch)	Swivel Radius with Total Lock (inch)	Swivel Radius with Wheel Brake (inch)
U20-42S-MCI	U20-42S-MCI-TL	U20-42R-MCI	4	2	1000	5-5/8	3-3/4	4	8-1/2
U20-52S-MCI	U20-52S-MCI-TL	U20-52R-MCI	5	2	1200	6-1/2	4-5/8	4-5/8	9-5/8
U20-62S-MCI	U20-62S-MCI-TL	U20-62R-MCI	6	2	1750	7-1/2	5-1/4	6	10-1/4
U20-82S-MCI	U20-82S-MCI-TL	U20-82R-MCI	8	2	2000	10-1/8	6-1/2	6-1/2	11-1/2

## 'U20' SERIES CASTERS WITH 'MDW' SERIES DUCTILE STEEL WHEELS

- Special Ductile Cast Steel wheels with fully machined tread face
- Crown Tread Face makes maneuverability easy
- Higher Load Capacities compared to Cast Iron Wheels
- Suitable for extra heavy loads towed in punishing conditions.
- High abrasion and oil resistance
- Bearing Options:- Precision Ball Bearings; Tapered Roller Bearings  
Roller Bearings
- Temperature Range: upto 800° F with appropriate bearings



Part No. Swivel Caster	Part No. Swivel with Total Lock	Part No. Rigid Caster	Wheel Dia (inch)	Tread Width (inch)	Load Capacity (Lbs)	Overall Height (inch)	Swivel Radius (inch)	Swivel Radius with Total Lock (inch)	Swivel Radius with Wheel Brake (inch)
U20-42S-MDW	U20-42S-MDW-TL	U20-42R-MDW	4	2	1500	5-5/8	3-3/4	4	8-1/2
U20-52S-MDW	U20-52S-MDW-TL	U20-52R-MDW	5	2	1550	6-1/2	4-5/8	4-5/8	9-5/8
U20-62S-MDW	U20-62S-MDW-TL	U20-62R-MDW	6	2	2000	7-1/2	5-1/4	6	10-1/4
U20-82S-MDW	U20-82S-MDW-TL	U20-82R-MDW	8	2	2000	10-1/8	6-1/2	6-1/2	11-1/2



## 'U20' SERIES CASTERS WITH 'DF' SERIES DROP FORGED STEEL WHEELS

- Hot forged from AISI 1045 steel with fully machined tread faces
- Virtually indestructible and easy to maneuver
- High abrasion and oil resistant
- Can be used in the roughest of applications on the poorest of floors
- Bearing Options:- Precision Ball Bearings; Tapered Roller Bearings  
Roller Bearings
- Temperature Range: -150° F upto 800° F with appropriate bearings



Part No. Swivel Caster	Part No. Swivel with Total Lock	Part No. Rigid Caster	Wheel Dia (inch)	Tread Width (inch)	Load Capacity (Lbs)	Overall Height (inch)	Swivel Radius (inch)	Swivel Radius with Total Lock (inch)	Swivel Radius with Wheel Brake (inch)
U20-42S-DF	U20-42S-DF-TL	U20-42R-DF	4	2	1800	5-5/8	3-3/4	4	8-1/2
U20-52S-DF	U20-52S-DF-TL	U20-52R-DF	5	2	2000	6-1/2	4-5/8	4-5/8	9-5/8
U20-62S-DF	U20-62S-DF-TL	U20-62R-DF	6	2	2000	7-1/2	5-1/4	6	10-1/4
U20-82S-DF	U20-82S-DF-TL	U20-82R-DF	8	2	2000	10-1/8	6-1/2	6-1/2	11-1/2

## 'U20' SERIES CASTERS WITH MUVTUFF 'MCNY' SERIES CAST POLY WHEELS

- Machined from Tough, High Impact resistant Cast Polyamide
- Ultimate choice for Extremely High Load applications to replace metallic wheels
- Offer very high Abrasion resistance and very low rolling resistance under extreme loads
- Resistant to Salt, Grease, Alcohol and mild acids - can be used in corrosive applications with appropriate bearings
- Bearing Options:- Precision Ball Bearings; Tapered Roller Bearings  
Roller Bearings
- Temperature Range: -40° F to +180° F with appropriate bearings



Part No. Swivel Caster	Part No. Swivel with Total Lock	Part No. Rigid Caster	Wheel Dia (inch)	Tread Width (inch)	Load Capacity (Lbs)	Overall Height (inch)	Swivel Radius (inch)	Swivel Radius with Total Lock (inch)	Swivel Radius with Wheel Brake (inch)
U20-42S-MCNY	U20-42S-MCNY-TL	U20-42R-MCNY	4	2	2000	5-5/8	3-3/4	4	8-1/2
U20-52S-MCNY	U20-52S-MCNY-TL	U20-52R-MCNY	5	2	2000	6-1/2	4-5/8	4-5/8	9-5/8
U20-62S-MCNY	U20-62S-MCNY-TL	U20-62R-MCNY	6	2	2000	7-1/2	5-1/4	6	10-1/4
U20-82S-MCNY	U20-82S-MCNY-TL	U20-82R-MCNY	8	2	2000	10-1/8	6-1/2	6-1/2	11-1/2





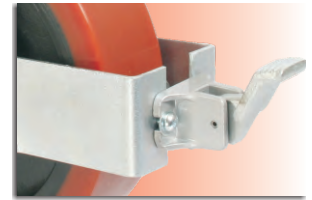
# U25 SERIES



Swivel Head Section



Total Lock System



Wheel Face Brake



Directional Lock

## 2,500 Lbs. Load Capacity Integral Kingpin Type Forged Casters

Single piece Drop Forged AISI 1045 Steel Top Plate with an Integrally Forged Kingpin

Forged AISI 1045 Steel Fork Base

Main Swivel Raceway : Precision CNC Machined - 3-1/4" dia with 7/16" ball bearings

Secondary Load Bearing: 3/4" Bore Tapered Roller Bearing for superior swiveling and perfect swivel head alignment

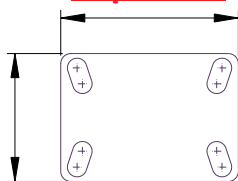
5/16" thick x 2-1/2" wide fork legs Cylindrically Formed and Robotically Welded Inside and Outside to 3-1/2" fork spacing

3/4" Wheel axle

4 Position Directional Lock Slots

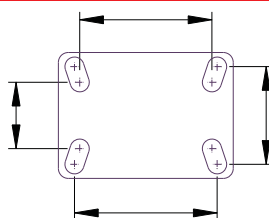
Finish: Bright Zinc Plated

### Top Plate



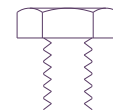
4-1/2" x 6-1/4"

### Bolt Hole Centers



2-7/16 x 4-15/16  
Slotted To  
3-3/8" x 5-1/4"

### Attaching Bolt Size



1/2"



## 'U25' SERIES CASTERS WITH 'SAS' SERIES HIGH LOAD CAPACITY POLYURETHANE WHEELS

- High Load Capacity Liquid Cast Premium Polyurethane Wheels 93 + 3 Shore A
- Polyurethane firmly bonded to precision machined Cast Iron Core
- Low rolling resistance, Smooth and Noiseless running.
- Non-Marking and floor protective.
- High Abrasion, Cut and Tear resistant
- 100% tested and guaranteed against Bond Failures.
- Bearing Options: Precision Ball Bearings; Tapered Roller Bearings  
Roller Bearings
- Temperature Range: -40°F to + 180°F



Part No. Swivel Caster	Part No. Swivel with Total Lock	Part No. Rigid Caster	Wheel Dia (inch)	Tread Width (inch)	Load Capacity (Lbs)	Overall Height (inch)	Swivel Radius (inch)	Swivel Radius with Total Lock (inch)	Swivel Radius with Wheel Brake (inch)
U25-625S-SAS	U25-625S-SAS-TL	U25-625R-SAS	6	2.5	2100	7-1/2	5-1/2	6	10-1/2
U25-63S-SAS	U25-63S-SAS-TL	U25-63R-SAS	6	3	2300	7-1/2	5-1/2	6	10-1/2
U25-825S-SAS	U25-825S-SAS-TL	U25-825R-SAS	8	2.5	2500	10-1/8	6-1/2	6-1/2	11-1/2
U25-83S-SAS	U25-83S-SAS-TL	U25-83R-SAS	8	3	2500	10-1/8	6-1/2	6-1/2	11-1/2
U25-1025S-SAS	U25-1025S-SAS-TL	U25-1025R-SAS	10	2.5	2500	11-1/2	7-3/4	7-3/4	12-3/4
U25-103S-SAS	U25-103S-SAS-TL	U25-103R-SAS	10	3	2500	11-1/2	7-3/4	7-3/4	12-3/4
U25-1225S-SAS	U25-1225S-SAS-TL	U25-1225R-SAS	12	2.5	2500	13-1/2	9-1/4	9-1/4	14-1/4
U25-123S-SAS	U25-123S-SAS-TL	U25-123R-SAS	12	3	2500	13-1/2	9-1/4	9-1/4	14-1/4

## 'U25' SERIES CASTERS WITH 'SZS' SERIES THICK TREADED ELASTIC URETHANE WHEELS

- Elastic 85±3 Shore A Liquid Cast Polyurethane firmly bonded to Cast Iron Core
- Reduced noise due to cushioning of loads,
- Lively Polyurethane allows wheels to 'Flex and Roll' over debris
- Excellent for power towing applications
- Non-Marking and floor protective.
- 100% Tested and Guaranteed against bond failures
- Bearing Options:- Precision Ball Bearings; Tapered Roller Bearings  
Roller Bearings;
- Temperature Range:- -40° F to + 180° F



Part No. Swivel Caster	Part No. Swivel with Total Lock	Part No. Rigid Caster	Wheel Dia (inch)	Tread Width (inch)	Load Capacity (Lbs)	Overall Height (inch)	Swivel Radius (inch)	Swivel Radius with Total Lock (inch)	Swivel Radius with Wheel Brake (inch)
U25-625S-SZS	U25-625S-SZS-TL	U25-625R-SZS	6	2.5	1600	7-1/2	5-1/2	6	10-1/2
U25-63S-SZS	U25-63S-SZS-TL	U25-63R-SZS	6	3	1800	7-1/2	5-1/2	6	10-1/2
U25-825S-SZS	U25-825S-SZS-TL	U25-825R-SZS	8	2.5	2000	10-1/8	6-1/2	6-1/2	11-1/2
U25-83S-SZS	U25-83S-SZS-TL	U25-83R-SZS	8	3	2400	10-1/8	6-1/2	6-1/2	11-1/2
U25-1025S-SZS	U25-1025S-SZS-TL	U25-1025R-SZS	10	2.5	2200	11-1/2	7-3/4	7-3/4	12-3/4
U25-103S-SZS	U25-103S-SZS-TL	U25-103R-SZS	10	3	2500	11-1/2	7-3/4	7-3/4	12-3/4
U25-1225S-SZS	U25-1225S-SZS-TL	U25-1225R-SZS	12	2.5	2500	13-1/2	9-1/4	9-1/4	14-1/4
U25-123S-SZS	U25-123S-SZS-TL	U25-123R-SZS	12	3	2500	13-1/2	9-1/4	9-1/4	14-1/4



## 'U25' SERIES CASTERS WITH 'SJS' SERIES POLYURETHANE WHEELS

- Liquid Cast Polyurethane 93 ± 3 Shore A firmly bonded to precision machined Cast Iron Cores.
- Low rolling resistance; Smooth and noiseless running
- Non-Marking and floor protective
- Good Abrasion and cut resistance
- 100% Tested and Guaranteed against bond failures
- Ideal for medium duty applications
- Bearing Options:- Precision Ball Bearings; Tapered Roller Bearings  
Roller Bearings
- Temperature Range: -40° F to +180° F



Part No. Swivel Caster	Part No. Swivel with Total Lock	Part No. Rigid Caster	Wheel Dia (inch)	Tread Width (inch)	Load Capacity (Lbs)	Overall Height (inch)	Swivel Radius (inch)	Swivel Radius with Total Lock (inch)	Swivel Radius with Wheel Brake (inch)
U25-625S-SJS	U25-625S-SJS-TL	U25-625R-SJS	6	2.5	1600	7-1/2	5-1/2	6	10-1/2
U25-63S-SJS	U25-63S-SJS-TL	U25-63R-SJS	6	3	2100	7-1/2	5-1/2	6	10-1/2
U25-825S-SJS	U25-825S-SJS-TL	U25-825R-SJS	8	2.5	2100	10-1/8	6-1/2	6-1/2	11-1/2
U25-83S-SJS	U25-83S-SJS-TL	U25-83R-SJS	8	3	2500	10-1/8	6-1/2	6-1/2	11-1/2
U25-1025S-SJS	U25-1025S-SJS-TL	U25-1025R-SJS	10	2.5	2300	11-1/2	7-3/4	7-3/4	12-3/4
U25-103S-SJS	U25-103S-SJS-TL	U25-103R-SJS	10	3	2500	11-1/2	7-3/4	7-3/4	12-3/4
U25-1225S-SJS	U25-1225S-SJS-TL	U25-1225R-SJS	12	2.5	2500	13-1/2	9-1/4	9-1/4	14-1/4
U25-123S-SJS	U25-123S-SJS-TL	U25-123R-SJS	12	3	2500	13-1/2	9-1/4	9-1/4	14-1/4

## 'U25' SERIES CASTERS WITH 'MCI' SERIES CAST IRON WHEELS

- Special Grey cast iron wheels - solid core construction
- Fully machined tread faces – crown treaded for easy maneuverability.
- High abrasion and oil resistant
- Can be used upto 800° F with appropriate wheel bearings.
- Bearing Options:- Precision Ball Bearings; Tapered Roller Bearings  
Roller Bearings
- Temperature Range: upto 800° F with appropriate bearings



Part No. Swivel Caster	Part No. Swivel with Total Lock	Part No. Rigid Caster	Wheel Dia (inch)	Tread Width (inch)	Load Capacity (Lbs)	Overall Height (inch)	Swivel Radius (inch)	Swivel Radius with Total Lock (inch)	Swivel Radius with Wheel Brake (inch)
U25-625S-MCI	U25-625S-MCI-TL	U25-625R-MCI	6	2.5	2500	7-1/2	5-1/2	6	10-1/2
U25-63S-MCI	U25-63S-MCI-TL	U25-63R-MCI	6	3	2500	7-1/2	5-1/2	6	10-1/2
U25-825S-MCI	U25-825S-MCI-TL	U25-825R-MCI	8	2.5	2500	10-1/8	6-1/2	6-1/2	11-1/2
U25-83S-MCI	U25-83S-MCI-TL	U25-83R-MCI	8	3	2500	10-1/8	6-1/2	6-1/2	11-1/2
U25-1025S-MCI	U25-1025S-MCI-TL	U25-1025R-MCI	10	2.5	2500	11-1/2	7-3/4	7-3/4	12-3/4
U25-103S-MCI	U25-103S-MCI-TL	U25-103R-MCI	10	3	2500	11-1/2	7-3/4	7-3/4	12-3/4
U25-1225S-MCI	U25-1225S-MCI-TL	U25-1225R-MCI	12	2.5	2500	13-1/2	9-1/4	9-1/4	14-1/4
U25-123S-MCI	U25-123S-MCI-TL	U25-123R-MCI	12	3	2500	13-1/2	9-1/4	9-1/4	14-1/4



## 'U25' SERIES CASTERS WITH 'MDW' SERIES DUCTILE STEEL WHEELS

- Special Ductile Cast Steel wheels with fully machined tread face
- Crown Tread Face makes maneuverability easy
- Higher Load Capacities compared to Cast Iron Wheels
- Suitable for extra heavy loads towed in punishing conditions.
- High abrasion and oil resistance
- Bearing Options:- Precision Ball Bearings; Tapered Roller Bearings  
Roller Bearings
- Temperature Range: upto 800° F with appropriate bearings



Part No. Swivel Caster	Part No. Swivel with Total Lock	Part No. Rigid Caster	Wheel Dia (inch)	Tread Width (inch)	Load Capacity (Lbs)	Overall Height (inch)	Swivel Radius (inch)	Swivel Radius with Total Lock (inch)	Swivel Radius with Wheel Brake (inch)
U25-625S-MDW	U25-625S-MDW-TL	U25-625R-MDW	6	2.5	2500	7-1/2	5-1/2	6	10-1/2
U25-63S-MDW	U25-63S-MDW-TL	U25-63R-MDW	6	3	2500	7-1/2	5-1/2	6	10-1/2
U25-825S-MDW	U25-825S-MDW-TL	U25-825R-MDW	8	2.5	2500	10-1/8	6-1/2	6-1/2	11-1/2
U25-83S-MDW	U25-83S-MDW-TL	U25-83R-MDW	8	3	2500	10-1/8	6-1/2	6-1/2	11-1/2
U25-1025S-MDW	U25-1025S-MDW-TL	U25-1025R-MDW	10	2.5	2500	11-1/2	7-3/4	7-3/4	12-3/4
U25-103S-MDW	U25-103S-MDW-TL	U25-103R-MDW	10	3	2500	11-1/2	7-3/4	7-3/4	12-3/4
U25-1225S-MDW	U25-1225S-MDW-TL	U25-1225R-MDW	12	2.5	2500	13-1/2	9-1/4	9-1/4	14-1/4
U25-123S-MDW	U25-123S-MDW-TL	U25-123R-MDW	12	3	2500	13-1/2	9-1/4	9-1/4	14-1/4

## 'U25' SERIES CASTERS WITH 'ME' SERIES ERGONOMIC WHEELS

- Ergonomic Premium Polyurethane Wheels for low Push-Pull Efforts
- Polyurethane 93 ± 3 Shore A mechanically and chemically bonded to precision machined cores.
- Non-Marking and floor protective.
- 100% Tested and Guaranteed against bond failures
- Tread Options : Softer 80A – Yellow Tread (Specify ME-Z) and Harder 73D –Blue Tread (Specify ME-F)
- Bearing Options:- Precision Ball Bearings; Tapered Roller Bearings  
Roller Bearings;
- Temperature Range:- -40° F to + 180° F



Part No. Swivel Caster	Part No. Swivel with Total Lock	Part No. Rigid Caster	Wheel Dia (inch)	Tread Width (inch)	Load Capacity (Lbs)	Overall Height (inch)	Swivel Radius (inch)	Swivel Radius with Total Lock (inch)	Swivel Radius with Wheel Brake (inch)
U25-43S-ME	U25-43S-ME-TL	U25-43R-ME	4	3	1850	7-1/2	5-1/2	6	10-1/2
U25-83S-ME	U25-83S-ME-TL	U25-83R-ME	8	3	2400	10-1/8	6-1/2	6-1/2	11-1/2
U25-103S-ME	U25-103S-ME-TL	U25-103R-ME	10	3	2500	11-1/2	7-3/4	7-3/4	12-3/4
U25-123S-ME	U25-123S-ME-TL	U25-123R-ME	12	3	2500	13-1/2	9-1/4	9-1/4	14-1/4

## 'U25' SERIES CASTERS WITH 'SEB' SERIES HEAVY DUTY MOLDON RUBBER WHEELS

- Elastic Rubber tired wheels chemically bonded to precision machined Cast Iron Cores.
- Highly resilient 75 ± 5 Shore A rubber.
- Smooth and silent running in power towing applications.
- Bearing Options:- Precision Ball Bearings; Tapered Roller Bearings  
Roller Bearings
- Temperature Range: -40° F to +180° F



Part No. Swivel Caster	Part No. Swivel with Total Lock	Part No. Rigid Caster	Wheel Dia (inch)	Tread Width (inch)	Load Capacity (Lbs)	Overall Height (inch)	Swivel Radius (inch)	Swivel Radius with Total Lock (inch)	Swivel Radius with Wheel Brake (inch)
U25-63S-SEB	U25-63S-SEB-TL	U25-63R-SEB	6	3	950	7-1/2	5-1/2	6	10-1/2
U25-83S-SEB	U25-83S-SEB-TL	U25-83R-SEB	8	3	1200	10-1/8	6-1/2	6-1/2	11-1/2
U25-103S-SEB	U25-103S-SEB-TL	U25-103R-SEB	10	3	1650	11-1/2	7-3/4	7-3/4	12-3/4
U25-123S-SEB	U25-123S-SEB-TL	U25-123R-SEB	12	3	1850	13-1/2	9-1/4	9-1/4	14-1/4



## 'U25' SERIES CASTERS WITH 'SFS' SERIES SOLID ELASTOMER WHEELS

- The Ultimate Real Solid Elastomer Wheels exclusively developed by Muvtons Premium Liquid Cast 73 ± 3 Shore D Polyurethane locked mechanically to a non-corrosive metallic core that holds the precision bearings and provides structural rigidity.
- Resist compression set and provide excellent resilience for easy movement
- Non-Marking and floor protective
- Can be used for corrosive applications with suitable bearings.
- 100% Tested and Guaranteed against failures
- Bearing Options:- Precision Ball Bearings; Tapered Roller Bearings  
Roller Bearings
- Temperature Range:- -40° F to + 180° F



Part No. Swivel Caster	Part No. Swivel with Total Lock	Part No. Rigid Caster	Wheel Dia (inch)	Tread Width (inch)	Load Capacity (Lbs)	Overall Height (inch)	Swivel Radius (inch)	Swivel Radius with Total Lock (inch)	Swivel Radius with Wheel Brake (inch)
U25-63S-SFS	U25-63S-SFS-TL	U25-63R-SFS	6	3	2400	7-1/2	5-1/2	6	10-1/2
U25-83S-SFS	U25-83S-SFS-TL	U25-83R-SFS	8	3	2500	10-1/8	6-1/2	6-1/2	11-1/2
U25-1025S-SFS	U25-1025S-SFS-TL	U25-1025R-SFS	10	2.5	2500	11-1/2	7-3/4	7-3/4	12-3/4
U25-103S-SFS	U25-103S-SFS-TL	U25-103R-SFS	10	3	2500	11-1/2	7-3/4	7-3/4	12-3/4
U25-123S-SFS	U25-123S-SFS-TL	U25-123R-SFS	12	3	2500	13-1/2	9-1/4	9-1/4	14-1/4

## 'U25' SERIES CASTERS WITH 'DF' SERIES DROP FORGED STEEL WHEELS

- Hot forged from AISI 1045 steel with fully machined tread faces
- Virtually indestructible and easy to maneuver
- High abrasion and oil resistant
- Can be used in the roughest of applications on the poorest of floors
- Bearing Options:- Precision Ball Bearings; Tapered Roller Bearings  
Roller Bearings
- Temperature Range: -150° F upto 800° F with appropriate bearings



Part No. Swivel Caster	Part No. Swivel with Total Lock	Part No. Rigid Caster	Wheel Dia (inch)	Tread Width (inch)	Load Capacity (Lbs)	Overall Height (inch)	Swivel Radius (inch)	Swivel Radius with Total Lock (inch)	Swivel Radius with Wheel Brake (inch)
U25-63S-DF	U25-63S-DF-TL	U25-63R-DF	6	3	2500	7-1/2	5-1/2	6	10-1/2
U25-83S-DF	U25-83S-DF-TL	U25-83R-DF	8	3	2500	10-1/8	6-1/2	6-1/2	11-1/2
U25-103S-DF	U25-103S-DF-TL	U25-103R-DF	10	3	2500	11-1/2	7-3/4	7-3/4	12-3/4
U25-123S-DF	U25-123S-DF-TL	U25-123R-DF	12	3	2500	13-1/2	9-1/4	9-1/4	14-1/4

## 'U25' SERIES CASTERS WITH MUVTUFF 'MCNY' SERIES CAST POLY WHEELS

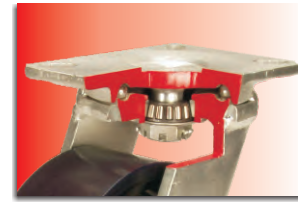
- Machined from Tough, High Impact resistant Cast Polyamide
- Ultimate choice for Extremely High Load applications to replace metallic wheels
- Offer very high Abrasion resistance and very low rolling resistance under extreme loads
- Resistant to Salt, Grease, Alcohol and mild acids - can be used in corrosive applications with appropriate bearings
- Bearing Options:- Precision Ball Bearings; Tapered Roller Bearings  
Roller Bearings
- Temperature Range: -40° F to +180° F with appropriate bearings



Part No. Swivel Caster	Part No. Swivel with Total Lock	Part No. Rigid Caster	Wheel Dia (inch)	Tread Width (inch)	Load Capacity (Lbs)	Overall Height (inch)	Swivel Radius (inch)	Swivel Radius with Total Lock (inch)	Swivel Radius with Wheel Brake (inch)
U25-63S-MCNY	U25-63S-MCNY-TL	U25-63R-MCNY	6	3	2500	7-1/2	5-1/2	6	10-1/2
U25-83S-MCNY	U25-83S-MCNY-TL	U25-83R-MCNY	8	3	2500	10-1/8	6-1/2	6-1/2	11-1/2
U25-103S-MCNY	U25-103S-MCNY-TL	U25-103R-MCNY	10	3	2500	11-1/2	7-3/4	7-3/4	12-3/4
U25-123S-MCNY	U25-123S-MCNY-TL	U25-123R-MCNY	12	3	2500	13-1/2	9-1/4	9-1/4	14-1/4

# U30

## SERIES



Swivel Head Section



Total Lock System



Wheel Face Brake



Directional Lock

### 3,500 Lbs. Load Capacity Integral Kingpin Type Forged Casters

Single piece Drop Forged AISI 1045 Steel Top Plate with an Integrally Forged Kingpin

Forged AISI 1045 Steel Fork Base

Main Swivel Raceway : Precision CNC Machined - 4" dia with 1/2" ball bearings

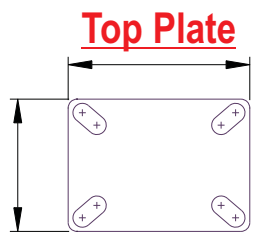
Secondary Load Bearing: 1" Bore Tapered Roller Bearing for superior swiveling and perfect swivel head alignment

3/8" thick x 3" wide fork legs Cylindrically Formed and Robotically Welded Inside and Outside to 3-1/2" fork spacing

3/4" Wheel axle

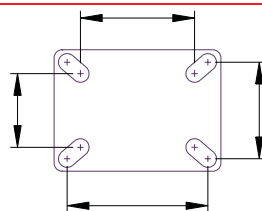
4 Position Directional Lock Slots

Finish: Bright Zinc Plated



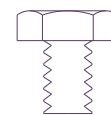
5-1/4" x 7-1/4"

**Bolt Hole Centers**



3-3/8 x 5-1/4  
Slotted To  
4-1/8" x 6-1/8"

**Attaching Bolt Size**



1/2"



## 'U30' SERIES CASTERS WITH 'SAS' SERIES HIGH LOAD CAPACITY POLYURETHANE WHEELS

- High Load Capacity Liquid Cast Premium Polyurethane Wheels 93 ± 3 Shore A
- Polyurethane firmly bonded to precision machined Cast Iron Core
- Low rolling resistance, Smooth and Noiseless running.
- Non-Marking and floor protective.
- High Abrasion, Cut and Tear resistant
- 100% tested and guaranteed against Bond Failures.
- Bearing Options: Precision Ball Bearings; Tapered Roller Bearings  
Roller Bearings
- Temperature Range: -40°F to + 180°F



Part No. Swivel Caster	Part No. Swivel with Total Lock	Part No. Rigid Caster	Wheel Dia  (inch)	Tread Width  (inch)	Load Capacity  (Lbs)	Overall Height  (inch)	Swivel Radius  (inch)	Swivel Radius with Total Lock  (inch)	Swivel Radius with Wheel Brake  (inch)
U30-63S-SAS	U30-63S-SAS-TL	U30-63R-SAS	6	3	2300	8	5-1/4	6	10-1/4
U30-83S-SAS	U30-83S-SAS-TL	U30-83R-SAS	8	3	3100	10-1/2	6-3/8	6-3/8	11-3/8
U30-103S-SAS	U30-103S-SAS-TL	U30-103R-SAS	10	3	3500	12-1/2	7-3/4	7-3/4	12-3/4
U30-123S-SAS	U30-123S-SAS-TL	U30-123R-SAS	12	3	3500	15-1/2	8-1/2	8-1/2	13-1/2

## 'U30' SERIES CASTERS WITH 'ME' SERIES ERGONOMIC WHEELS

- Ergonomic Premium Polyurethane Wheels for low Push-Pull Efforts
- Polyurethane 93 ± 3 Shore A mechanically and chemically bonded to precision machined cores.
- Non-Marking and floor protective.
- 100% Tested and Guaranteed against bond failures
- Tread Options : Softer 80A – Yellow Tread (Specify ME-Z) and Harder 73D – Blue Tread (Specify ME-F)
- Bearing Options:- Precision Ball Bearings; Tapered Roller Bearings  
Roller Bearings;
- Temperature Range:- 40° F to + 180° F



Part No. Swivel Caster	Part No. Swivel with Total Lock	Part No. Rigid Caster	Wheel Dia  (inch)	Tread Width  (inch)	Load Capacity  (Lbs)	Overall Height  (inch)	Swivel Radius  (inch)	Swivel Radius with Total Lock  (inch)	Swivel Radius with Wheel Brake  (inch)
U30-63S-ME	U30-63S-ME-TL	U30-63R-ME	6	3	1850	8	5-1/4	6	10-1/4
U30-83S-ME	U30-83S-ME-TL	U30-83R-ME	8	3	2400	10-1/2	6-3/8	6-3/8	11-3/8
U30-103S-ME	U30-103S-ME-TL	U30-103R-ME	10	3	2850	12-1/2	7-3/4	7-3/4	12-3/4
U30-123S-ME	U30-123S-ME-TL	U30-123R-ME	12	3	3500	15-1/2	8-1/2	8-1/2	13-1/2

## 'U30' SERIES CASTERS WITH 'SFS' SERIES SOLID ELASTOMER WHEELS

- The Ultimate Real Solid Elastomer Wheels exclusively developed by Muvtons
- Premium Liquid Cast 73 ± 3 Shore D Polyurethane locked mechanically to a non-corrosive metallic core that holds the precision bearings and provides structural rigidity.
- Resist compression set and provide excellent resilience for easy movement
- Non-Marking and floor protective
- Can be used for corrosive applications with suitable bearings.
- 100% Tested and Guaranteed against failures
- Bearing Options:- Precision Ball Bearings; Tapered Roller Bearings  
Roller Bearings
- Temperature Range:- 40° F to + 180° F



Part No. Swivel Caster	Part No. Swivel with Total Lock	Part No. Rigid Caster	Wheel Dia  (inch)	Tread Width  (inch)	Load Capacity  (Lbs)	Overall Height  (inch)	Swivel Radius  (inch)	Swivel Radius with Total Lock  (inch)	Swivel Radius with Wheel Brake  (inch)
U30-63S-SFS	U30-63S-SFS-TL	U30-63R-SFS	6	3	2400	8	5-1/4	6	10-1/4
U30-83S-SFS	U30-83S-SFS-TL	U30-83R-SFS	8	3	2400	10-1/2	6-3/8	6-3/8	11-3/8
U30-103S-SFS	U30-103S-SFS-TL	U30-103R-SFS	10	3	2850	12-1/2	7-3/4	7-3/4	12-3/4
U30-123S-SFS	U30-123S-SFS-TL	U30-123R-SFS	12	3	3500	15-1/2	8-1/2	8-1/2	13-1/2



## 'U30' SERIES CASTERS WITH 'SEB' SERIES HEAVY DUTY MOLDON RUBBER WHEELS

- Elastic Rubber tired wheels chemically bonded to precision machined Cast Iron Cores.
- Highly resilient 75 ± 5 Shore A rubber.
- Smooth and silent running in power towing applications.
- Bearing Options:- Precision Ball Bearings; Tapered Roller Bearings
- Temperature Range: -40° F to +180° F



Part No. Swivel Caster	Part No. Swivel with Total Lock	Part No. Rigid Caster	Wheel Dia (inch)	Tread Width (inch)	Load Capacity (Lbs)	Overall Height (inch)	Swivel Radius (inch)	Swivel Radius with Total Lock (inch)	Swivel Radius with Wheel Brake (inch)
U30-63S-SEB	U30-63S-SEB-TL	U30-63R-SEB	6	3	950	8	5-1/4	6	10-1/4
U30-83S-SEB	U30-83S-SEB-TL	U30-83R-SEB	8	3	1200	10-1/2	6-3/8	6-3/8	11-3/8
U30-103S-SEB	U30-103S-SEB-TL	U30-103R-SEB	10	3	1650	12-1/2	7-3/4	7-3/4	12-3/4
U30-123S-SEB	U30-123S-SEB-TL	U30-123R-SEB	12	3	1850	15-1/2	8-1/2	8-1/2	13-1/2

## 'U30' SERIES CASTERS WITH 'DF' SERIES DROP FORGED STEEL WHEELS

- Hot forged from AISI 1045 steel with fully machined tread faces
- Virtually indestructible and easy to maneuver
- High abrasion and oil resistant
- Can be used in the roughest of applications on the poorest of floors
- Bearing Options:- Precision Ball Bearings; Tapered Roller Bearings
- Temperature Range: -150° F upto 800° F with appropriate bearings



Part No. Swivel Caster	Part No. Swivel with Total Lock	Part No. Rigid Caster	Wheel Dia (inch)	Tread Width (inch)	Load Capacity (Lbs)	Overall Height (inch)	Swivel Radius (inch)	Swivel Radius with Total Lock (inch)	Swivel Radius with Wheel Brake (inch)
U30-63S-DF	U30-63S-DF-TL	U30-63R-DF	6	3	3500	8	5-1/4	6	10-1/4
U30-83S-DF	U30-83S-DF-TL	U30-83R-DF	8	3	3500	10-1/2	6-3/8	6-3/8	11-3/8
U30-103S-DF	U30-103S-DF-TL	U30-103R-DF	10	3	3500	12-1/2	7-3/4	7-3/4	12-3/4
U30-123S-DF	U30-123S-DF-TL	U30-123R-DF	12	3	3500	15-1/2	8-1/2	8-1/2	13-1/2

## 'U30' SERIES CASTERS WITH MUVTUFF 'MCNY' SERIES CAST POLY WHEELS

- Machined from Tough, High Impact resistant Cast Polyamide
- Ultimate choice for Extremely High Load applications to replace metallic wheels
- Offer very high Abrasion resistance and very low rolling resistance under extreme loads
- Resistant to Salt, Grease, Alcohol and mild acids - can be used in corrosive applications with appropriate bearings
- Bearing Options:- Precision Ball Bearings; Tapered Roller Bearings
- Temperature Range: -40° F to +180° F with appropriate bearings



Part No. Swivel Caster	Part No. Swivel with Total Lock	Part No. Rigid Caster	Wheel Dia (inch)	Tread Width (inch)	Load Capacity (Lbs)	Overall Height (inch)	Swivel Radius (inch)	Swivel Radius with Total Lock (inch)	Swivel Radius with Wheel Brake (inch)
U30-63S-MCNY	U30-63S-MCNY-TL	U30-63R-MCNY	6	3	3500	8	5-1/4	6	10-1/4
U30-83S-MCNY	U30-83S-MCNY-TL	U30-83R-MCNY	8	3	3500	10-1/2	6-3/8	6-3/8	11-3/8
U30-103S-MCNY	U30-103S-MCNY-TL	U30-103R-MCNY	10	3	3500	12-1/2	7-3/4	7-3/4	12-3/4
U30-123S-MCNY	U30-123S-MCNY-TL	U30-123R-MCNY	12	3	3500	15-1/2	8-1/2	8-1/2	13-1/2



## 'U30' SERIES CASTERS WITH 'SZS' SERIES THICK TREADED ELASTIC URETHANE WHEELS

Elastic 85±3 Shore A Liquid Cast Polyurethane firmly bonded to Cast Iron Core  
 Reduced noise due to cushioning of loads,  
 Lively Polyurethane allows wheels to 'Flex and Roll' over debris  
 Excellent for power towing applications  
 Non-Marking and floor protective.  
 100% Tested and Guaranteed against bond failures  
 Bearing Options:- Precision Ball Bearings; Tapered Roller Bearings  
 Roller Bearings;  
 Temperature Range:- -40° F to +180° F



Part No. Swivel Caster	Part No. Swivel with Total Lock	Part No. Rigid Caster	Wheel Dia (inch)	Tread Width (inch)	Load Capacity (Lbs)	Overall Height (inch)	Swivel Radius (inch)	Swivel Radius with Total Lock (inch)	Swivel Radius with Wheel Brake (inch)
U30-625S-SZS	U30-625S-SZS-TL	U30-625R-SZS	6	2.5	1600	8	5-1/4	6	10-1/4
U30-63S-SZS	U30-63S-SZS-TL	U30-63R-SZS	6	3	1800	8	5-1/4	6	10-1/4
U30-825S-SZS	U30-825S-SZS-TL	U30-825R-SZS	8	2.5	2000	10-1/2	6-3/8	6-3/8	11-3/8
U30-83S-SZS	U30-83S-SZS-TL	U30-83R-SZS	8	3	2400	10-1/2	6-3/8	6-3/8	11-3/8
U30-1025S-SZS	U30-1025S-SZS-TL	U30-1025R-SZS	10	2.5	2200	12-1/2	7-3/4	7-3/4	12-3/4
U30-103S-SZS	U30-103S-SZS-TL	U30-103R-SZS	10	3	3100	12-1/2	7-3/4	7-3/4	12-3/4
U30-1225S-SZS	U30-1225S-SZS-TL	U30-1225R-SZS	12	2.5	2900	15-1/2	8-1/2	8-1/2	13-1/2
U30-123S-SZS	U30-123S-SZS-TL	U30-123R-SZS	12	3	3500	15-1/2	8-1/2	8-1/2	13-1/2

## 'U30' SERIES CASTERS WITH 'SJS' SERIES POLYURETHANE WHEELS

Liquid Cast Polyurethane 93 ± 3 Shore A firmly bonded to precision machined Cast Iron Cores.  
 Low rolling resistance; Smooth and noiseless running  
 Non-Marking and floor protective  
 Good Abrasion and cut resistance  
 100% Tested and Guaranteed against bond failures  
 Ideal for medium duty applications  
 Bearing Options:- Precision Ball Bearings; Tapered Roller Bearings  
 Roller Bearings  
 Temperature Range: -40° F to +180° F



Part No. Swivel Caster	Part No. Swivel with Total Lock	Part No. Rigid Caster	Wheel Dia (inch)	Tread Width (inch)	Load Capacity (Lbs)	Overall Height (inch)	Swivel Radius (inch)	Swivel Radius with Total Lock (inch)	Swivel Radius with Wheel Brake (inch)
U30-625S-SJS	U30-625S-SJS-TL	U30-625R-SJS	6	2.5	1600	8	5-1/4	6	10-1/4
U30-63S-SJS	U30-63S-SJS-TL	U30-63R-SJS	6	3	2100	8	5-1/4	6	10-1/4
U30-825S-SJS	U30-825S-SJS-TL	U30-825R-SJS	8	2.5	2100	10-1/2	6-3/8	6-3/8	11-3/8
U30-83S-SJS	U30-83S-SJS-TL	U30-83R-SJS	8	3	2500	10-1/2	6-3/8	6-3/8	11-3/8
U30-1025S-SJS	U30-1025S-SJS-TL	U30-1025R-SJS	10	2.5	2300	12-1/2	7-3/4	7-3/4	12-3/4
U30-103S-SJS	U30-103S-SJS-TL	U30-103R-SJS	10	3	3000	12-1/2	7-3/4	7-3/4	12-3/4
U30-1225S-SJS	U30-1225S-SJS-TL	U30-1225R-SJS	12	2.5	2700	15-1/2	8-1/2	8-1/2	13-1/2
U30-123S-SJS	U30-123S-SJS-TL	U30-123R-SJS	12	3	3500	15-1/2	8-1/2	8-1/2	13-1/2



## 'U30' SERIES CASTERS WITH 'MDW' SERIES DUCTILE STEEL WHEELS

- Special Ductile Cast Steel wheels with fully machined tread face
- Crown Tread Face makes maneuverability easy
- Higher Load Capacities compared to Cast Iron Wheels
- Suitable for extra heavy loads towed in punishing conditions.
- High abrasion and oil resistance
- Bearing Options:- Precision Ball Bearings; Tapered Roller Bearings  
Roller Bearings
- Temperature Range: upto 800° F with appropriate bearings



Part No. Swivel Caster	Part No. Swivel with Total Lock	Part No. Rigid Caster	Wheel Dia  (inch)	Tread Width  (inch)	Load Capacity  (Lbs)	Overall Height  (inch)	Swivel Radius  (inch)	Swivel Radius with Total Lock  (inch)	Swivel Radius with Wheel Brake  (inch)
U30-625S-MDW	U30-625S-MDW-TL	U30-625R-MDW	6	2.5	3200	8	5-1/4	6	10-1/4
U30-63S-MDW	U30-63S-MDW-TL	U30-63R-MDW	6	3	3300	8	5-1/4	6	10-1/4
U30-825S-MDW	U30-825S-MDW-TL	U30-825R-MDW	8	2.5	3500	10-1/2	6-3/8	6-3/8	11-3/8
U30-83S-MDW	U30-83S-MDW-TL	U30-83R-MDW	8	3	3500	10-1/2	6-3/8	6-3/8	11-3/8
U30-1025S-MDW	U30-1025S-MDW-TL	U30-1025R-MDW	10	2.5	3500	12-1/2	7-3/4	7-3/4	12-3/4
U30-103S-MDW	U30-103S-MDW-TL	U30-103R-MDW	10	3	3500	12-1/2	7-3/4	7-3/4	12-3/4
U30-1225S-MDW	U30-1225S-MDW-TL	U30-1225R-MDW	12	2.5	3500	15-1/2	8-1/2	8-1/2	13-1/2
U30-123S-MDW	U30-123S-MDW-TL	U30-123R-MDW	12	3	3500	15-1/2	8-1/2	8-1/2	13-1/2

## 'U30' SERIES CASTERS WITH 'MCI' SERIES CAST IRON WHEELS

- Special Grey cast iron wheels - solid core construction
- Fully machined tread faces – crown treaded for easy maneuverability.
- High abrasion and oil resistant
- Can be used upto 800° F with appropriate wheel bearings.
- Bearing Options:- Precision Ball Bearings; Tapered Roller Bearings  
Roller Bearings
- Temperature Range: upto 800° F with appropriate bearings



Part No. Swivel Caster	Part No. Swivel with Total Lock	Part No. Rigid Caster	Wheel Dia  (inch)	Tread Width  (inch)	Load Capacity  (Lbs)	Overall Height  (inch)	Swivel Radius  (inch)	Swivel Radius with Total Lock  (inch)	Swivel Radius with Wheel Brake  (inch)
U30-625S-MCI	U30-625S-MCI-TL	U30-625R-MCI	6	2.5	2500	8	5-1/4	6	10-1/4
U30-63S-MCI	U30-63S-MCI-TL	U30-63R-MCI	6	3	2500	8	5-1/4	6	10-1/4
U30-825S-MCI	U30-825S-MCI-TL	U30-825R-MCI	8	2.5	2800	10-1/2	6-3/8	6-3/8	11-3/8
U30-83S-MCI	U30-83S-MCI-TL	U30-83R-MCI	8	3	3500	10-1/2	6-3/8	6-3/8	11-3/8
U30-1025S-MCI	U30-1025S-MCI-TL	U30-1025R-MCI	10	2.5	3200	12-1/2	7-3/4	7-3/4	12-3/4
U30-103S-MCI	U30-103S-MCI-TL	U30-103R-MCI	10	3	3500	12-1/2	7-3/4	7-3/4	12-3/4
U30-1225S-MCI	U30-1225S-MCI-TL	U30-1225R-MCI	12	2.5	3500	15-1/2	8-1/2	8-1/2	13-1/2
U30-123S-MCI	U30-123S-MCI-TL	U30-123R-MCI	12	3	3500	15-1/2	8-1/2	8-1/2	13-1/2